



WORLD

AU
PRODUCT CATALOGUE NO. 35 2021



ANY QUESTIONS? CONTACT US

office@au.fmworld.com

Find us on Instagram:

[@fmworldaustraliaofficial](https://www.instagram.com/fmworldaustraliaofficial)

Visit our online shop:

shop-global.fmworld.com

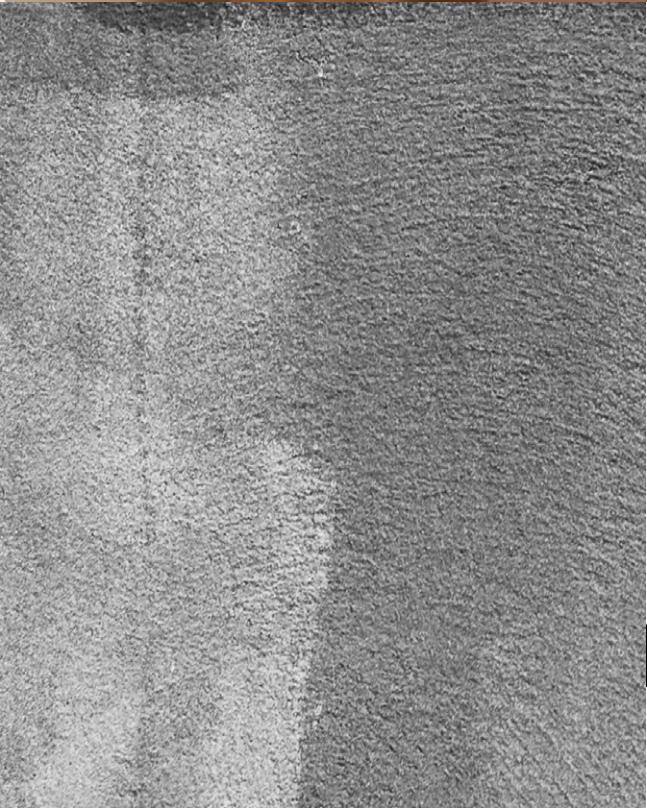
shop-au.fmworld.com

FM WORLD PRODUCTS AUSTRALIA Pty Ltd
10 Short Street, Eraring NSW 2264
Registered under the Corporations Act 2001
under Australian Company Number 635 302 653

e-mail: office@au.fmworld.com
au.fmworld.com

CONTENTS

UTIQUE		4-19
ALAYA		20-25
HAIRLAB		26-33
FONTAINAVIE		34-40





UTIQUE



In the world of luxury

Take a trip to the incredible land of UTIQUE, which offers rich compositions, precious oils and the best recipes. It is where class, sophistication and finesse meet together becoming a sensual sensation. Ideally composed fragrances reflect the beauty, harmony and energy of life. The exclusive range, which is an unforgettable fusion of subtlety and intensity of action. Let yourself be enchanted by the magic of the UTIQUE world.

COMING
SOON



MALACHITE

Perfume

Type:

- Enigmatic, thrilling, like four natural elements

Fragrance notes:

- Head: mandarin, bergamot, wallflower, plum aldehyde notes, blackcurrant, saffron, ivy, peach peel
- Heart: jasmine, violet, tuberose, iris, rose, lily of the valley, ylang-ylang, orange blossom
- Base: sandalwood, vanilla, moss, Haitian vetiver, patchouli, musk

100 ml | Fragrance: 20%
UTIQUE 100 | 502057 |

\$ 157

15 ml | Fragrance: 20%
UTIQUE 15 | 502057.02 |

\$ 47



AMBERGRIS

Perfume

Type:

- Deep, mysterious, absolute

Fragrance notes:

- Head: bergamot, red peppercorn, cumin seeds, cardamom
- Heart: wild jasmine, lily of the valley, ylang-ylang
- Base: ambergris, tonka bean, labdanum, leather, oakmoss, patchouli, musk

100 ml | Fragrance: 20%
UTIQUE 100 | 502048 |

\$ 157

15 ml | Fragrance: 20%
UTIQUE 15 | 502048.02 |

\$ 47



CHANGES COLOUR
LIKE A MINERAL

All senses intensify at nighttime. Malachite is a synonym of an adventure that starts at dusk and lasts eternally in your memory. It is like the lovers' dance in the moonlight, like a reunion of friends by the endless ocean. Impacted by the skin warmth it changes its colour like a mineral, turning its blissful tones into exciting chords.

SEA ACCORDS SPICED
WITH A PINCH OF
SPICINESS

Drifting on rough ocean waves ambergris captured in the stunning perfume Ambergris, delights with sea accords spiced with a pinch of spiciness. It is like a secret cruise at sunset, which does not end with the arrival of dawn. This is a mysterious story about the unprecedented power of attraction.

FLAMINGO

Perfume

- Type:
- Charming, seductive like a forbidden fruit
- Fragrance notes:
- Head: Rosa Mosqueta, blackberry sorbet, green notes
 - Heart: Damask Rose, jasmine, apricot
 - Base: woody notes, crystal rose chord, musk

100 ml | Fragrance: 20%
UTIQUE 100 | 502007 |

\$ 157

15 ml | Fragrance: 20%
UTIQUE 15 | 502007.02 |

\$ 47



BUBBLE

Perfume

- Type:
- Enchanting, delightful
- Fragrance notes:
- Head: bergamot, cardamom, lime
 - Heart: lily of the valley, jasmine, mint
 - Base: guaiac wood, musk, cedarwood

100 ml | Fragrance: 20%
UTIQUE 100 | 502009 |

\$ 157

15 ml | Fragrance: 20%
UTIQUE 15 | 502009.02 |

\$ 47



THE FRAGRANCE
OF UNDISCOVERED
PARADISE

Flamingo is the fragrance of undiscovered paradise. The essence of innocence and class. It is like a wonderful, colourful story. An unforgettable adventure to dive in with all your senses. Mysterious and undeniably glamorous.

THE MOST BEAUTIFUL
SUMMER MEMORIES

The breath of elegance and unique freshness locked in a bottle of Bubble perfume brings to mind the most beautiful summer memories. Just close your eyes and spray the fragrance for the incredibly refreshing aura. It will be like with the touch of a magic wand and you will be taken to the times of a carefree life.

MUFFIN Perfume

- Type:
- Intriguing, noble, unforgettable
- Fragrance notes:
- Head: lemon, rose, saffron
 - Heart: woody notes, peony, amyris, leather notes
 - Base: amber, oud, vanilla

100 ml | Fragrance: 20%
UTIQUE 100 | **502006** |

\$ **157**

15 ml | Fragrance: 20%
UTIQUE 15 | **502006.02** |

\$ **47**



SEXY CASHMERE Perfume

- Type:
- Uninhibited, ambiguous, triggering desires
- Fragrance notes:
- Head: plum
 - Heart: iris, violet, ylang-ylang, cedarwood, patchouli
 - Base: sandalwood, benzoin, vanilla, musk

100 ml | Fragrance: 20%
UTIQUE 100 | **502034** |

\$ **157**

15 ml | Fragrance: 20%
UTIQUE 15 | **502034.02** |

\$ **47**



A TEMPTATION YOU
CANNOT RESIST

Muffin is a temptation you cannot resist. Sweetness and sophistication in one. A marriage of extraordinary wealth and taste. Indulge yourself in the colourful world of those intriguing fragrance notes and every moment will change into an unforgettable experience.

AN EXPLOSION
OF DESIRE AND
IRREPRESSIBLE
PASSION

Sexy Cashmere is an explosion of desire and irrepressible passion. At first, it stuns with strong and hypnotising accords, slowly passing into softer and warmer notes enveloping the body like a cashmere scarf. A composition full of contradictions will ignite your imagination, bringing out your deepest desires.

AMBRE ROYAL Perfume

- Type:
- Sensual, charming, with a hint of mystery
- Fragrance notes:
- Head: bergamot, orange, apple, cinnamon
 - Heart: clove, tobacco, cedarwood
 - Base: patchouli, tonka bean, myrrh, musk

100 ml | Fragrance: 20%
UTIQUE 100 | 502008 |

\$ 157

15 ml | Fragrance: 20%
UTIQUE 15 | 502008.02 |

\$ 47



VIOLET OUD Perfume

- Type:
- Sophisticated, stunning
- Fragrance notes:
- Head: rose, suede, safflower
 - Heart: frozen raspberry, wild rose, cypriol
 - Base: agarwood, white musk, American sweetgum

100 ml | Fragrance: 20%
UTIQUE 100 | 502012 |

\$ 157

15 ml | Fragrance: 20%
UTIQUE 15 | 502012.02 |

\$ 47



CAPTIVATING LIKE
PRECIOUS JEWELLERY

Ambre Royal is a royal fragrance composition providing a mystic experience. Captivating like precious jewellery and surprising like the first summer rain. See for yourself how it will surprise you with the richness of the fragrance compositions with each developing hour.

MAJESTIC, NOBLE,
UNPREDICTABLE

Violet Oud has that mystical element to it which is the beginning of the new adventure to the unknown. Majestic, noble, unpredictable. Spray the magic around you and dive into the ravine of unpredictability.

GOLD Perfume

- Type:**
- Luxurious, exquisite
- Fragrance notes:**
- Head: red pepper, cedarwood, nutmeg
 - Heart: iris, saffron, vetiver
 - Base: cypriol, patchouli, black musk, amber

100 ml | Fragrance: 20%
UTIQUE 100 | **502002** |

\$ **157**

15 ml | Fragrance: 20%
UTIQUE 15 | **502002.02** |

\$ **47**



BLACK Perfume

- Type:**
- Elegant, sophisticated, mysterious
- Fragrance notes:**
- Head: woody notes, saffron, styrax
 - Heart: vetiver, amber, vanilla
 - Base: leather, sandalwood, amberwood

100 ml | Fragrance: 20%
UTIQUE 100 | **502001** |

\$ **157**

15 ml | Fragrance: 20%
UTIQUE 15 | **502001.02** |

\$ **47**



**THE ESSENCE
OF ORIENTAL
SPLENDOUR**

Gold perfume which dazzles like gold and is exquisite like handcrafted jewellery. Majestic, essential, inspiring. The essence of oriental splendour. Spray around the charming mist of sensual sensations.

**ADDICTIVE,
CAPTIVATING AND
ENCHANTING**

Black gives a unique meaning to every moment. Addictive, captivating and enchanting. It is a perfume with a mysterious dimension where warmth meets sophistication. Wrap yourself with the scent of black elegance.

RUBY Perfume

Type:

- Magnetic, attractive, seductive

Fragrance notes:

- Head: cashmere wood, jasmine, cistus
- Heart: vanilla, amberwood, balsamic notes
- Base: white oud, black musk, dry wood

100 ml | Fragrance: 20%
UTIQUE 100 | **502003** |

\$ **157**

15 ml | Fragrance: 20%
UTIQUE 15 | **502003.02** |

\$ **47**



BLACK Set

BLACK SET

Enter the world of black elegance, where there are sensual fragrances: Ruby, Gold and Black. The set contains three 15 ml perfume bottles packed in an tasteful box. Perfect as a gift to someone special or simply if you want to treat yourself with a great selection of captivating fragrances in a beautiful setting.

3 x 15 ml | Fragrance: 20%
502010 |

\$ **107**



**SEDUCES, ENSLAVES,
STIMULATES DESIRE**

Ruby awakens the senses and wraps the skin like delicate chiffon. Magnetism, passion, the most wonderful emotions locked in a bottle. It seduces, enslaves, stimulates desire. It is an escape from everyday life, the mystical journey into the depths of the human soul.

**CAPTIVATING SCENTS
IN A BEAUTIFUL
SETTING**

UTIQUE perfumes not only are available in smaller, handy 15 ml bottles but in elegant set too. Captivating scents in a beautiful setting.



The brightest among all the stars

Reach for the sky. Allow yourself to have more. Discover the luxurious line of cosmetics for in-depth skin care and sophisticated makeup. ALAYA is perfect in every inch, starting with a logotype that expresses its uniqueness and elegant packaging, through high-quality formulas, up to astounding, long-lasting effects. Soar above the horizons and let your makeup look delight like the masterpiece of an artist.

SUNNY SOFT TOUCH

Luminous- -Bronzing

SUNNY SOFT TOUCH
LUMINOUS-BRONZING
POWDER

It makes the skin look healthy and radiant as if sun-kissed and illuminated by sparking rays. Thanks to its silky texture, it is a source of excellent well-being from the moment of application.

- provides a natural tan effect with a delicate golden glow
- spreads evenly
- leaves no streaks or smudges

11.5 g | 602022 |

\$ **78**



GLASS SKIN

Highlighter Palette

GLASS SKIN
HIGHLIGHTER PALETTE

It instantly revives and rejuvenates the skin visually. Thanks to high-pigment intensity, it provides an extremely luminous finish for an unbelievably long time. Perfect for both day and evening makeup looks.

- gives the skin a fresh and radiant glow
- allows obtaining the so-called glow effect
- efficient and multifunctional
- in warm, cool and neutral shades

15 g | 602023 |

\$ **78**

- CHAMPAGNE
- CASHMERE
- TIME OF FAME
- MOON DUST
- PINK DIAMOND



IN AN ELEGANT
COMPACT
WITH A MIRROR



FOR EVERY TYPE
OF BEAUTY



VEGAN
FRIENDLY



IN AN ELEGANT
COMPACT
WITH A MIRROR



FOR EVERY TYPE
OF BEAUTY



VEGAN
FRIENDLY

EYESHADOW Palette

EYESHADOW PALETTE

Thanks to the silky soft texture of the eyeshadows you can easily change any makeup into a real piece of art. You'll feel like an artist with a painting palette of the most beautiful colours.

- enables blending colours and creating a seamless transition of their shades
- eyeshadows do not flake off or crumble
- highly pigmented
- in a wide range of colours
- vegan based formula

9 g

\$ **64**



HARMONY

606081 |

- LAST NIGHT
- FLIRT
- SEDUCTION
- VENUS
- TRUFFLE
- ROYAL
- WHITE GOLD



IN AN ELEGANT
COMPACT
WITH A MIRROR



FOR EVERY TYPE
OF BEAUTY



H A I R L A B

Discover the beauty of having healthy hair

Professional hair care in the comfort of your home? From now on, it is possible. To meet your expectations, we have created HAIRLAB – the line of hair care cosmetics ensuring healthy and beautiful looking hair. A rich composition and perfect recipes tailored to your individual needs will make the dream of a great hairstyle a reality. Give your hair the best possible treatment and your hair will become your most beautiful ornament.

Maciej Maniewski – is well known as a celebrity hairdresser, the head of the judges in a television show 'Master Cut', the host of the show 'Hairdresser's affair' and the master of metamorphosis from the TV show 'Sablewska's way to fashion'. Connected with the fashion industry for many years; a man for whom hair has no secrets. He has now become the ambassador of the prestigious line of products – HAIRLAB.



Dry Hair SHAMPOO

RAPID² HAIR REFRESH DRY SHAMPOO

Thanks to rice starch and tapioca flour, it works like a sponge absorbing excess sebum and impurities giving the hair a just-washed look. The unique formula ensures instant action and unprecedented ease of use.

- **effectively cleanses and refreshes hair without using water**
- **visibly increases the volume of hair giving it lift at the root, perfect for travel and before an unexpected night out**
- **smells of juicy apple**

150 ml | 520020 |

\$ **28.5**



SHAMPOO For Dry Hair

AQUA² SHAMPOO

Makes the driest hair recover its original healthy look and shine. Thanks to hyaluronic acid, it intensively moisturises, nourishes and strengthens hair and gently cleanses the skin.

- **with extremely moisturising hyaluronic acid**
- **makes hair shiny and bouncy**
- **best results when used with the Aqua² Mask**

250 ml | 520001 |

\$ **70**

50 ml | 520001.02 |

\$ **23**



RAPID² REFRESHING

Unannounced visits, sudden trips, unexpected meetings – whatever the circumstances, we want to look perfect. The RAPID² REFRESHING line will give your hair a flawless look in every situation.

AQUA²

Thanks to an intensively nourishing formula enriched with an extra dose of hyaluronic acid, the AQUA² line perfectly hydrates hair which is dry, prone to frizzing and damaged. AQUA² brings back flexibility and silkiness to hair, providing glow and protection also to colour-treated hair.

MASK
For Dry Hair

AQUA² MASK

Rescue for dry, damaged and frizzy hair. The mask intensively moisturises and nourishes hair, making it look healthy and shiny. In addition, it makes combing hair easier. Effect: strong hair full of glow.

- requires rinsing
- rich in precious linseed, jojoba and rice oils
- prevents hair from breaking and picking up static
- to strengthen the results of the mask add a few drops of Aqua² Oil
- if you have colour-treated hair, add a few drops of the Ideal² Colour Elixir to the mask to enhance the depth and richness of your hair colour and make it glow

250 ml | 520003 |

\$ 70

30 ml | 520003.02 |

\$ 23



Hair OIL
Intensively
Moisturising

AQUA² OIL

Rebuilds, moisturises and smooths hair. It prevents split ends and makes it easy to comb. Specially selected ingredients protect your hair from loss of water. Massage just a few drops of essential oil into your hair.

- contains jojoba oil which improves the condition of hair
- can be applied on wet and dry hair
- intensively moisturises hair making it soft and shiny

100 ml | 520004 |

\$ 74.5



AQUA²

Thanks to an intensively nourishing formula enriched with an extra dose of hyaluronic acid, the AQUA² line perfectly hydrates hair which is dry, prone to frizzing and damaged. AQUA² brings back flexibility and silkiness to hair, providing glow and protection also to colour-treated hair.

AQUA²

Intense Regenerating MASK

INTENSE² REGENERATING MASK

If you have a problem with damaged, very sensitive hair, this mask is perfect for you. Thanks to the panthenol, it perfectly moisturises as well as rebuilds and strengthens hair. Hair becomes stronger and more flexible.

- requires rinsing
- professional care for even the most damaged hair
- to enhance the mask effect, add a few drops of the Ideal² Colour Elixir (especially for colour-treated hair)

30 ml | 520006.02 |

\$ 24



For Curly Hair MASK

CURLY² MASK

Perfectly complements the care of curly hair. Synergistic effect of the cosmetics of the entire HAIRLAB line, gentle on the skin and hair, supports their combing and styling.

- makes it easy to style curly hair
- contains shea butter, avocado oil and hydrolysed collagen
- use with Curly² Shampoo and Curly² Smoothing Emulsion

250 ml | 520018 |

\$ 70



INTENSE² REGENERATING

Thanks to carefully selected ingredients, it provides intense hydration and nutrition for dry and damaged hair. The series comprises three ideally paired products which guarantee the best possible condition of your hair.

CURLY²

Rich in precious nourishing ingredients CURLY² products make hair smooth and easier to style. It creates a seal which prevents curly hair from absorbing too much water, protects it against environmental conditions and high temperature during styling.



F O N T A I N A V I E

A source of youthful looking skin

Regardless of our age, we want to have a dazzling smile and for our skin to remain firm and radiant for as long as possible. Scientists in laboratories all over the world continue to test and improve formulas that will enable them to stop time on our skin. We have used cutting-edge technologies and drawn upon groundbreaking discoveries to create a brand of specialised skincare products called FONTAINAVIE. This is our tested formula for eternal youth.



HYDROTHERAPY

Hyaluronic Sheet Mask

HYDROTHERAPY
HYALURONIC SHEET MASK

Occlusive properties of the sheet significantly increase the penetration of nutrients into the skin. Thanks to this, they perfectly tighten it, smoothing out fine lines, intensively nourish and effectively regenerate.

- **rich in active moisturising ingredients**
- **provides a beautiful and healthy look**
- **ensures visible skin rejuvenation effect**

20 ml | 503033 |

\$ **23**



ULTRAMOISTURISING PROPERTIES

It contains a wealth of ingredients naturally found in the skin, such as hyaluronic acid, amino acid complex, a sodium salt of pyroglutamic acid and urea. Thanks to the ability to bind water, they intensively and long-lastingly moisturise the skin, leaving it firm and velvety smooth.

100% of respondents* confirm that it:

- cares for the skin
- moisturises it for a long time
- provides intensive regeneration
- visibly rejuvenates
- leaves the skin firm and velvety smooth

*Trial study conducted on a group of 25 women aged 19 to 56 over the period 4 weeks.

CONFIRMED RESULTS

Exfoliating

SHOWER GEL

EXFOLIATING
SHOWER GEL

Perfectly smoothens the skin and prepares it for sunbathing. Thanks to exfoliating particles made of calcareous algae, it removes dead skin cells, making the tan more even and long-lasting.

- **2 in 1: cleanses and effectively scrubs**
- **an essential step on the way to perfect skin colour**
- **contains cotton extract, vitamin E and red algae**

250 ml | 504021 |

\$ **40**



TANNED AND WELL-CARED-FOR SKIN

SUN & CARE cosmetic collection was created to prepare you for sunbathing and to preserve the suntan, while taking care of your skin's condition.



Sun Protection LOTION

SUN PROTECTION LOTION

It contains aloe vera extract rich in nutritious vitamins, amino acids, micro- and macronutrients, as well as moisturising glycerine, which perfectly soothes dry skin and regulates its renewal processes.

- **protects against UV radiation**
- **guarantees effective care**
- **in two SPF levels**

SPF 15 (MEDIUM PROTECTION)

150 ml | 504022 |

\$ **48.5**



Nourishing TAN Accelerator

NOURISHING TAN ACCELERATOR

Contains cocoa butter, carrot seed oil and soya phytosterols, which perfectly nourish and moisturise the skin, visibly improving its firmness and elasticity. Thanks to its excellent biocompatibility, it effectively rebuilds the epidermal protective barrier.

- **2 in 1: facilitates obtaining a beautiful skin tone and intensively nourishes the skin**
- **with vitamin E to delay the ageing process**
- **with natural active ingredients**
- **ideal for face and body**

150 ml | 504020 |

\$ **41.5**



After Sun Illuminating **DRY OIL**

AFTER SUN ILLUMINATING DRY OIL

Thanks to sunflower, grape seed and cottonseed oils as well as vitamin E it soothes, moisturises and smoothes the skin. Leaves it soft to the touch and full of glow.

- **rich in natural ingredients**
- **with highlighting mica particles**
- **beautifully enhances the tan**
- **lightweight formula**
- **absorbs quickly**

100 ml | 504025 |

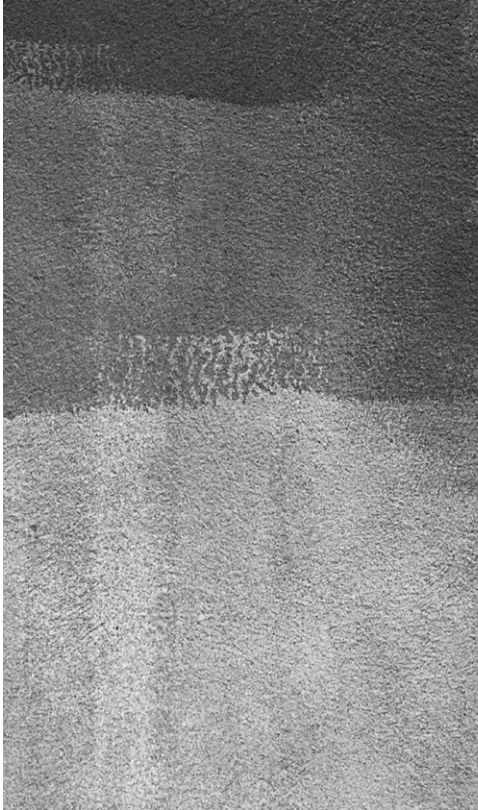
\$ **46**





WORLD

AU
PRODUCT CATALOGUE NO. 35 2021



ANY QUESTIONS? CONTACT US

office@au.fmworld.com

Find us on Instagram:

[@fmworldaustraliaofficial](https://www.instagram.com/fmworldaustraliaofficial)

Visit our online shop:

shop-global.fmworld.com

shop-au.fmworld.com

FM WORLD PRODUCTS AUSTRALIA Pty Ltd
10 Short Street, Earing NSW 2264
Registered under the Corporations Act 2001
under Australian Company Number 635 302 653

**e-mail: office@au.fmworld.com
au.fmworld.com**

CONTENTS

PURE ROYAL		4-33
PURE		34-61
BODY CARE		62-84
MAKEUP		85-112
SMART & CLEAN		113-115
FRAGRANCES LIST		116-120



A romantic couple is shown in a close embrace. The woman, on the left, has long, wavy brown hair and is wearing a strapless, shimmering gold sequined dress. She has red lipstick and is looking down. The man, on the right, has short brown hair and a beard, and is wearing a dark purple shirt. He is looking down at the woman. The background is a dark, textured surface covered in fine, sparkling gold particles, creating a magical, starry effect. The overall mood is intimate and luxurious.

FEDERICO MAHORA

PURE
H O M E

Pure Royal

Welcome to the magical world of Pure Royal fragrances.
On the following pages you will find all your favorite fragrances
from this line. Immerse yourself in the world of your favorite
perfumes and find a product that suits you. We are constantly
changing for the better – for you....

FLORAL

SENSUAL
AND ROMANTIC

This is the most comprehensive family of fragrances. Floral compositions create fresh, ethereal and delicate bouquets. You can go ahead and experiment with scents and change them depending on the occasion. The romantic character of these perfumes was created to emphasise sensuality.

FOUGERE

SEDUCTIVE
AND CLASSIC

An exceptionally intriguing family of fragrances, dominated by forest, grass and herbal accords. Its name comes from French and means fern. Designed for those who appreciate the classics and value traditional beauty canons. Compositions, which represent professionalism and emphasise the style of a mature man.

CITRUS

JOYFUL
AND ENERGETIC

Juicy fruits form an extremely refreshing citrus group provide a refreshing sensation and an amazing boost of energy. They emphasise your temperament, sociable and cheerful nature, and put you in a good mood. Perfect for people who enjoy life to the fullest.

ORIENTAL

STRONG
AND UNTAMED

Fragrances associated with Far East countries, reminiscent of exotic trips, mysterious places and intriguing situations. These are compositions with warm and exotic tones. Both sweet and smoky notes appear in them. They are perfect for autumn and winter days and special occasions.

CHYPRE

SENSUAL
AND TEMPTING

This family is dominated by bold, strong and chic compositions. They evoke the smell of silk scarves and elegant gloves. Woody and herbal-earth notes pulsating in perfumes give them a clear and fresh aroma that attracts attention and adds confidence. Suitable for people with a strong character; intriguing and sensual.

WOODY

SOPHISTICATED
AND CLASSY

Warm and deep notes combined with refined accords create an elegant and sophisticated group of fragrances. Many of them were used to create perfume in ancient times. They stand out with a resin, forest aroma. These moody, mysterious and noble compositions add faith to your abilities.



PURE ROYAL 500

Perfume

WOODY

sophisticated and classy

WITH A CITRUS NOTE

Type:

- monumental, but bright

Fragrance notes:

- Head: angelica, saffron, lime, galbanum, lime peel, mandarin
- Heart: jasmine, heliotropium, myrrh, carrot, iris
- Base: sandalwood, vanilla, labdanum, oakmoss, leather, Haitian vetiver, musk

50 ml | Fragrance: 20%

170500 |

\$ **74**

RICH STRUCTURE

The rich structure of PURE ROYAL 500 perfume, seemingly heterogenous and contrasting, creates a surprisingly coherent history. It starts with the fresh and bright tones of citrus notes and galbanum, accompanied by distinctive angelica and saffron. Next comes the heart of this fragrance – a flower bouquet with a hint of myrrh. At the end, it takes on its final character, showing its true majesty owed to organic-wood accords.

The Golden Edition fragrances have more refined and sophisticated ingredients than their partner Pure Royal perfumes and have more Personal Points.



FLORAL

sensual and romantic

WITH A CHYPRE NOTE

PURE ROYAL 908
170908 |

Type:
elegant, fresh as a garden in the morning

Fragrance notes:
Head: bergamot, coriander, plum
Heart: jasmine, rose, peony, suede
Base: patchouli, ambrette seeds, moss, amber

PURE ROYAL 970
170970 |

Type:
silky, classic

Fragrance notes:
Head: ylang-ylang, green notes, rose, fruity notes
Heart: heliotrope, peach blossom, light wood
Base: violet, woody and amber notes, musk

PURE ROYAL 971
170971 |

Type:
sophisticated, sensual

Fragrance notes:
Head: pepper, coriander, rhubarb
Heart: gardenia, tuberose, jasmine, clove, lily of the valley
Base: ambergris, vetiver, leather

PURE ROYAL 976
170976 |

Type:
fresh, expressive

Fragrance notes:
Head: apricot, mandarin, orange
Heart: jasmine, neroli, orange blossom
Base: musk, patchouli, vanilla

WITH AN ORIENTAL NOTE

PURE ROYAL 909
170909 |

Type:
fresh, with an edgy element

Fragrance notes:
Head: bergamot, mandarin, honey, rum
Heart: orchid, magnolia, jasmine, rose, orange blossom, heliotrope
Base: sandalwood, citrus, myrrh, Peru balsam, leather, vanilla

PURE ROYAL 915
170915 |

Type:
juicy, sweet, airy

Fragrance notes:
Head: hyacinth, clove
Heart: lily of the valley, jasmine, wild rose
Base: white amber, musk

PURE ROYAL 922
170922 |

Type:
unobvious, deep

Fragrance notes:
Head: orange flower, leafy notes, clove
Heart: ylang-ylang, jasmine, rose
Base: cedar wood, musk, amber

PURE ROYAL 979
170979 |

Type:
sensual, bold

Fragrance notes:
Head: almond
Heart: tuberose, rose, ambrette seed
Base: vanilla, iris, musk

WITH A WOODY NOTE

PURE ROYAL 918
170918 |

Type:
bright, fresh

Fragrance notes:
Head: rhubarb, peach leaf
Heart: violet, rose
Base: light wood, musk

WITH A CITRUS NOTE

PURE ROYAL 921
170921 |

Type:
dazzling, energising

Fragrance notes:
Head: mandarin, calamondin, orange
Heart: hibiscus, lotus flower, orange flower, jasmine
Base: vanilla, cistus, cedar wood, honey

WITH A FRUITY NOTE

PURE ROYAL 929
170929 |

Type:
warm, joyous, tempting

Fragrance notes:
Head: peony, apple, fruity notes, citrus notes
Heart: Damascus Rose, dianthus, jasmine
Base: white musk, amber, moss, leather

WITH A GOURMAND NOTE

PURE ROYAL 934
170934 |

Type:
delicate, addictive

Fragrance notes:
Head: honey, orange, cherry
Heart: jasmine, rose, orange tree, lily of the valley, clove
Base: sandalwood, cypress, coconut, caramel, cedarwood, peach skin, musk

PURE ROYAL 975
170975 |

Type:
flirtatious, delicious

Fragrance notes:
Head: bergamot, orange, grape
Heart: jasmine, freesia, cardamom, magnolia, saffron, pink pepper, rose essence
Base: patchouli, tonka bean, oak moss, cedarwood, peach skin, amber, musk, sugar



PURE ROYAL
Perfume

50 ml | Fragrance: 20%

\$ 60

CITRUS

joyful and energetic

WITH A CHYPRE NOTE

PURE ROYAL 902
170902 |

Type:
fresh, bright, energising

Fragrance notes:
Head: mandarin, bergamot, lemon
Heart: petitgrain, orange blossom, pepper
Base: cedarwood, musk, moss

WITH A FRUITY NOTE

PURE ROYAL 903
170903 |

Type:
energising, positive

Fragrance notes:
Head: mandarin, bergamot, lemon, petitgrain, rosemary
Heart: neroli, orange blossom, jasmine
Base: cedarwood, musk, peach

WITH A LIME NOTE

PURE ROYAL 911
170911 |

Type:
positive, captivating with a hint of lime

Fragrance notes:
Head: grapefruit, bergamot, lime, basil, lemon
Heart: thyme, lilac, jasmine, iris
Base: vetiver, patchouli, cedarwood, labdanum, musk

WITH A FLORAL NOTE

PURE ROYAL 914
170914 |

Type:
refreshing, sparkling, sweet

Fragrance notes:
Head: bergamot, green notes, salty notes
Heart: sage, fruity notes, floral notes
Base: woody notes, amber, musk

WITH AN ORANGE NOTE

PURE ROYAL 917
170917 |

Type:
serious with a radiant accent

Fragrance notes:
Head: orange, mandarin, sage
Heart: jasmine, orange flower
Base: honey, sunny notes

ORIENTAL

strong and untamed

WITH A WOODY NOTE

PURE ROYAL 904
170904 |

Type:
rebellious, bold, brisk

Fragrance notes:
Head: cumin, cardamom, cyclamen
Heart: incense, iris, earthy notes
Base: musk, leather, sandalwood

PURE ROYAL 905
170905 |

Type:
balancing between the sacred and the profane

Fragrance notes:
Head: plum, raspberry, rhubarb, pomegranate, clove
Heart: pink pepper, jasmine, opoponax, patchouli, lily
Base: guaiac wood, cedarwood, amberwood, incense, vanilla

PURE ROYAL 974
170974 |

Type:
severe, uncompromising

Fragrance notes:
Head: mandarin
Heart: geranium, rose
Base: oud, leather, patchouli, musk

WITH A SPICY NOTE

PURE ROYAL 906
170906 |

Type:
passionate, sensual

Fragrance notes:
Head: bergamot, nectarine, ginger
Heart: jasmine, carnation, cinnamon leaves, rosemary, heliotrope
Base: vanilla, tonka bean, cedarwood, tobacco, patchouli

WITH A GOURMAND NOTE

PURE ROYAL 923
170923 |

Type:
charming, attractive, disarming

Fragrance notes:
Head: citrus notes, spicy notes, cinnamon, clove, ginger, cardamom, fruity notes
Heart: woody notes, floral notes
Base: amber, musk, powdery notes

PURE ROYAL 930
170930 |

Type:
appetising, sweet and savoury

Fragrance notes:
Head: oud, sweet notes, honey
Heart: Damask rose, clove
Base: moss, amber, patchouli

WITH A CHYPRE NOTE

PURE ROYAL 925
170925 |

Type:
business, modern

Fragrance notes:
Head: grapefruit, sage, neroli
Heart: nutmeg, lily, spicy notes
Base: oakmoss, amber, cedar wood, white musk

PURE ROYAL 926
170926 |

Type:
mature, defined

Fragrance notes:
Head: saffron, thyme, raspberry
Heart: jasmine, incense, cedar wood, vanilla
Base: woody notes, amber, leather, moss

WITH A FOUGERE NOTE

PURE ROYAL 927
170927 |

Type:
mature, uncompromising

Fragrance notes:
Head: pink berries, bergamot, verbena, cumin
Heart: pepper, iris, rose, nutmeg
Base: patchouli, vanilla, amber, animal notes

WITH A FLORAL NOTE

PURE ROYAL 913
170913 |

Type:
warm, sweet, inviting

Fragrance notes:
Head: pink pepper, bergamot, orange, pistachio
Heart: coconut, ylang-ylang, jasmine, tuberose
Base: benzoin resin, tonka bean, vanilla, amber

PURE ROYAL 920
170920 |

Type:
untamed, surprising

Fragrance notes:
Head: pink pepper, incense, rose
Heart: leather, red fruit, saffron
Base: peach, oud, amber

WITH A FRUITY NOTE

PURE ROYAL 972
170972 |

Type:
exotic, inviting

Fragrance notes:
Head: raspberry, passionfruit, pineapple, blackcurrant
Heart: peach blossom, lily of the valley, peony
Base: vanilla, drifting amber, cedarwood, patchouli, musk

CHYPRE

sensual and tempting

WITH A SPICY NOTE

PURE ROYAL 901
170901 |

Type:
classic, balanced, elegant

Fragrance notes:
Head: mandarin, wormwood, juniper
Heart: cardamom, ginger, lavender
Base: cedarwood, amber, patchouli

WITH A FLORAL NOTE

PURE ROYAL 912
170912 |

Type:
urban, modern, combative

Fragrance notes:
Head: bergamot, lemon, pepper, petitgrain
Heart: neroli, orange blossom, basil
Base: musk, vetiver

WITH A FRUITY NOTE

PURE ROYAL 916
170916 |

Type:
mysterious, intriguing

Fragrance notes:
Head: bergamot, basil, mint
Heart: freesia, pear, rose
Base: musk, patchouli, sandalwood



PURE ROYAL
Perfume

50 ml | Fragrance: 20%

\$ 60

WOODY

sophisticated and classy

WITH A FRUITY NOTE

PURE ROYAL 900
170900 |

Type:
fascinating, unique, charming cherry scent

Fragrance notes:

Head: black cherry, cherry liqueur, bitter almonds
Heart: rose, jasmine, sour cherry
Base: tonka bean, sandalwood, vetiver, cedarwood

PURE ROYAL 977
170977 |

Type:
energetic, combative

Fragrance notes:

Head: apple, plum, pineapple, lime, lemon, bergamot, mandarin
Heart: rose, jasmine, lily of the valley, orchid, iris, gardenia
Base: tonka bean, sandalwood, cedarwood, patchouli, white musk, ambergris

WITH A CITRUS NOTE

PURE ROYAL 907
170907 |

Type:
fresh, elusive

Fragrance notes:

Head: yellow mandarin, lemon, pineapple, bergamot, wallflower, cardamom, pink pepper
Heart: jasmine, lily of the valley, black pepper, iris, ozonic notes
Base: dry wood, white musk, warm notes, powdery notes, vetiver, cedarwood

WITH A GOURMAND NOTE

PURE ROYAL 910
170910 |

Type:
dry, scented with a hint of sweetness

Fragrance notes:

Head: jasmine, saffron
Heart: balsam fir, cedarwood
Base: cashmere wood, ambergris, moss, brown sugar

WITH A FLORAL NOTE

PURE ROYAL 924
170924 |

Type:
casual, transparent, friendly

Fragrance notes:

Head: mandarin, neroli, saffron, cardamom, nutmeg
Heart: Damascus Rose, jasmine, orange flower, floral notes, cedar wood
Base: amber, sweet wood, sandalwood, vanilla, milk

WITH A FOUGERE NOTE

PURE ROYAL 931
170931 |

Type:
primal, untamed

Fragrance notes:

Head: pink berries, white forest, rose
Heart: iris, saffron, leather, amber wood
Base: vanilla, white moss, dry wood, musk

WITH AN ORIENTAL NOTE

PURE ROYAL 932
170932 |

Type:
relaxing, charming

Fragrance notes:

Head: vanilla, coumarin, amber wood, musk
Heart: mugwort, mint, light wood
Base: cardamom, lavender, fresh flowers

FOUGERE

seductive and classic

WITH A LAVENDER NOTE

PURE ROYAL 919
170919 |

Type:
dignified, expressive, bright

Fragrance notes:

Head: lime, basil, lemon
Heart: jasmine, lavender, white tea
Base: oakmoss, vetiver, musk, ambergris

PURE ROYAL 933
170933 |

Type:
surprising, extravagant

Fragrance notes:

Head: coriander, grapefruit, lemon, absinthe, juniper berry
Heart: cashmeran, lavender, jasmine, sage
Base: sandalwood, moss, dry wood, musk, Virginian juniper



PURE ROYAL
Perfume

50 ml | Fragrance: 20%

\$ 60

FOUGERE

seductive and classic

WITH A CHYPRE NOTE

PURE ROYAL 973
170973 |

Type:
herbal, defined

Fragrance notes:

Head: caramel, tobacco, red berries, orange
Heart: tuberose, lily, orchid
Base: vanilla, patchouli

WITH A GREEN NOTE

PURE ROYAL 928
170928 |

Type:
astounding with the scent of blackberry bush

Fragrance notes:

Head: blackberry, blackcurrant, peach, lemon, green notes
Heart: cyclamen, white flowers, sweet notes
Base: sandalwood, amber, moss



SPECIAL EDITION

The iconic fragrance with an elegant appearance is the perfect gift idea for that special person. The classic look of the perfume bottle with a vintage pump is a real treat for perfume connoisseurs. Rediscover the captivating combination of lemon, sweet raspberry and honey with the intoxicating scent of orange blossom, jasmine, and patchouli.

These are perfumes from the Pure Royal line, which have a special, exceptionally elegant packaging for even greater satisfaction for you and your loved ones.

FLORAL

sensual and romantic

WITH A FRUITY NOTE

PURE ROYAL 841
170841 |
Type:
balanced, clearly rose
Fragrance notes:
Head: bergamot, lychee, pear leaves
Heart: rose, magnolia, violet
Base: plum, musk

PURE ROYAL 845
170845 |
Type:
light, dazzling
Fragrance notes:
Head: peach, bergamot, rhubarb, elemi resin, pear, pineapple, Osmanthus, blackcurrant, lemon, fig, sweet orange
Heart: violet, ylang-ylang, iris, magnolia, rose, lily of the valley, ozonic notes, jasmine, sage, black tea, orange blossom, geranium, American mint
Base: sandalwood, white musk, cedarwood, benzoin resin, vetiver, cashmeran, patchouli, cypriol, gourmand notes

PURE ROYAL 847
170847 |
Type:
friendly, serene
Fragrance notes:
Head: mandarin, ylang-ylang, pear, red fruits
Heart: jasmine sambac, apricot, cedarwood, orange blossom
Base: vanilla, tuberose, amber, musk

WITH A GOURMAND NOTE

PURE ROYAL 842
170842 |
Type:
appetising, warm
Fragrance notes:
Head: peach, bergamot, rhubarb, ginger, pear, pineapple, blackcurrant, coconut, apple, mandarin
Heart: jasmine, freesia, rose, lily of the valley, gardenia, green notes, orange blossom
Base: vanilla, cedarwood, tonka bean, ambergris, sandalwood, musk

PURE ROYAL 846
170846 |
Type:
charming but edgy
Fragrance notes:
Head: mandarin, pear, red fruits
Heart: jasmine, orange blossom, white pepper
Base: caramel, milky notes, amber, musk

WITH A CHYPRE NOTE

PURE ROYAL 848
170848 |
Type:
stylish, modern
Fragrance notes:
Head: mandarin, bergamot, pear
Heart: jasmine, rose, geranium
Base: patchouli, sandalwood, musk

WOODY

sophisticated and classy

WITH A CITRUS NOTE

PURE ROYAL 843
170843 |
Type:
bright, elegant
Fragrance notes:
Head: mandarin, lemon, lavender
Heart: jasmine, pear, orange blossom
Base: vanilla, woody notes, amber, musk

CITRUS

joyful and energetic

WITH A FLORAL NOTE

PURE ROYAL 844
170844 |
Type:
fresh, serene
Fragrance notes:
Head: mandarin, marine notes, lemon, green apple, tropical fruits
Heart: jasmine, violet, ylang-ylang, lily of the valley, blackcurrant, hyacinth, geranium
Base: patchouli, benzoin resin, coconut, peach skin, musk

PURE ROYAL Perfume
50 ml | Fragrance: 20%
\$ 60

FLORAL

sensual and romantic

WITH A FRUITY NOTE

PURE ROYAL 281
170281 |

Type:
vibrant, hot

Fragrance notes:
Head: blackcurrant
Heart: jasmine, rose
Base: musk, strawberry

PURE ROYAL 322
170322 |

Type:
serene, sensual

Fragrance notes:
Head: quince, grapefruit
Heart: jasmine, hyacinth
Base: white musk, cedarwood

PURE ROYAL 708
170708 |

Type:
harmonious, juicy

Fragrance notes:
Head: bergamot, lychee, peach
Heart: jasmine, peony, orange blossom
Base: woody notes, moss, musk

PURE ROYAL 711
170711 |

Type:
mature, balanced, friendly

Fragrance notes:
Head: apple, mandarin, clove, orange
Heart: rose, jasmine, orange blossom
Base: patchouli, vanilla, musk, sandalwood

PURE ROYAL 800
170800 |

Type:
feminine, joyful, sunny, full of positive energy

Fragrance notes:
Head: mandarin, grapefruit, blackcurrant
Heart: jasmine, tuberose, ylang-ylang
Base: rose, sandalwood, musk

PURE ROYAL 806
170806 |

Type:
bold, joyful, positive

Fragrance notes:
Head: mandarin, jasmine, water notes
Heart: rose, tuberose, ylang-ylang
Base: musk, sandalwood, cedarwood

PURE ROYAL 807
170807 |

Type:
romantic, light, fresh

Fragrance notes:
Head: bergamot, neroli, petitgrain
Heart: wild peach, lily of the valley, jasmine
Base: cedarwood, musk

PURE ROYAL 817
170817 |

Type:
joyful, subtle, full of brilliance

Fragrance notes:
Head: raspberry, lemon
Heart: rose, neroli
Base: musk, vanilla, patchouli

PURE ROYAL 818
170818 |

Type:
joyful, fresh, tempting

Fragrance notes:
Head: red berries, mandarin, lemon, pear
Heart: gardenia, jasmine, lily of the valley, neroli
Base: vanilla, patchouli, musk, benzoin resin

PURE ROYAL 827
170827 |

Type:
joyful, full of energy, sunny

Fragrance notes:
Head: peach, lemon, apple blossom, juicy pear, violet leaves
Heart: jasmine, freesia, hibiscus, green leaves
Base: musk, cedarwood, sandalwood

PURE ROYAL 833
170833 |

Type:
powdery, magnificent, feminine

Fragrance notes:
Head: peach, orange, honeysuckle
Heart: tuberose, jasmine, iris
Base: sandalwood, cedarwood, vanilla, musk

PURE ROYAL 835
170835 |

Type:
sweet, but edgy, feisty

Fragrance notes:
Head: apple, pear, bergamot, lemon, peach
Heart: lily of the valley, jasmine, rose, iris
Base: cedarwood, patchouli, vanilla, ambergris, musk

PURE ROYAL 836
170836 |

Type:
clear, pleasant, optimistic

Fragrance notes:
Head: pear, apple, bergamot, lily of the valley, raspberry
Heart: peony, rose, magnolia, freesia
Base: sandalwood, musk, patchouli, amber

WITH AN ALDEHYDE NOTE

PURE ROYAL 826
170826 |

Type:
classic, fresh

Fragrance notes:
Head: aldehyde, bergamot, violet
Heart: lily of the valley, jasmine, ylang-ylang
Base: clover, iris, musk

WITH AN ORIENTAL NOTE

PURE ROYAL 146
170146 |

Type:
imbued with sweetness, mysterious

Fragrance notes:
Head: freesia, apple, Jamaican pepper
Heart: violet, hibiscus, rose, lilac
Base: labdanum, sandalwood, cedarwood, suede

PURE ROYAL 147
170147 |

Type:
tasteful, alluring

Fragrance notes:
Head: lychee, mandarin, peach
Heart: plum, lily of the valley, lily
Base: vanilla, ambergris, musk, suede

PURE ROYAL 317
170317 |

Type:
seductive, sensual

Fragrance notes:
Head: red berries, pink pepper
Heart: raspberry, peach, violet, lilac
Base: patchouli, ambergris

PURE ROYAL 352
170352 |

Type:
velvety, thrilling

Fragrance notes:
Head: orange blossom
Heart: jasmine
Base: patchouli, honey

PURE ROYAL 355
170355 |

Type:
sensual, seductive

Fragrance notes:
Head: citrus notes
Heart: jasmine tea, lily
Base: sandalwood, cedarwood, vanilla



PURE ROYAL
Perfume

50 ml | Fragrance: 20%

\$ 60



Perfume
PURE ROYAL

50 ml | Fragrance: 20%
\$ 60

FLORAL

sensual and romantic

WITH A WATER NOTE

PURE ROYAL 141
170141 |

Type:
crystal clear, romantic

Fragrance notes:
Head: yuzu, pomegranate, ice chord
Heart: lotus, magnolia, peony
Base: ambergris, musk, mahogany

PURE ROYAL 707
170707 |

Type:
full of energy, evoking the memory of summer

Fragrance notes:
Head: bergamot, lemon, orange, mandarin, leafy notes
Heart: lily of the valley, jasmine, water notes
Base: patchouli, peach, ambergris

WITH A CITRUS NOTE

PURE ROYAL 298
170298 |

Type:
full of energy, fresh

Fragrance notes:
Head: citrus fruits, peony
Heart: rose, Osmanthus
Base: patchouli, sandalwood

PURE ROYAL 810
170810 |

Type:
subtle, delicate, feminine, serene

Fragrance notes:
Head: bergamot, mandarin, blackcurrant
Heart: pink peony, rose, lily of the valley, peach, apricot
Base: musk, amber, patchouli, oakmoss

WITH A WOODY NOTE

PURE ROYAL 365
170365 |

Type:
classic with a note of Baroque splendour

Fragrance notes:
Head: grapefruit, bergamot
Heart: rose, daffodil, jasmine, geranium, patchouli
Base: sandalwood, vanilla, white musk, tonka bean

PURE ROYAL 710
170710 |

Type:
tempting, nonconformist

Fragrance notes:
Head: jasmine, osmanthus, rose
Heart: tuberose, narcissus
Base: amber, cedarwood

PURE ROYAL 713
170713 |

Type:
rosy, defined, elegant

Fragrance notes:
Head: saffron
Heart: rose, jasmine, peony
Base: woody notes, musk, ambergris

PURE ROYAL 715
170715 |

Type:
diversified, elegant, classic

Fragrance notes:
Head: yellow mandarin, green pear, pink pepper, blackcurrent, peach, apple
Heart: jasmine sambac, orange tree, lily of the valley, rose, marigold
Base: patchouli, white musk, cedarwood, dry wood, vanilla, cashmere

PURE ROYAL 777
170777 |

Type:
elegant, toned, vintage

Fragrance notes:
Head: bergamot, peach, plum, blackcurrant, lily, pear
Heart: mimosa, rose, jasmine, heliotrope, lily of the valley, coconut
Base: vanilla, sandalwood, tonka bean, musk, caramel

CITRUS

joyful and energetic

WITH A MANDARIN NOTE

PURE ROYAL 801
170801 |

Type:
fresh, romantic, sensual, full of charm

Fragrance notes:
Head: citrus cocktail, pink berries, pear, green notes
Heart: rose, magnolia, night blooming jasmine
Base: patchouli, vanilla, tonka bean, sandalwood

WITH A LEMON NOTE

PURE ROYAL 712
170712 |

Type:
energetic, bright, southern

Fragrance notes:
Head: bergamot, lemon, red berries, clementine, apple blossom
Heart: cardamom, jasmine
Base: sandalwood, cedarwood, musk

PURE ROYAL 828
170828 |

Type:
delightful, full of sweetness

Fragrance notes:
Head: lemon, raspberry, almond, blackcurrant
Heart: rose, orange blossom, jasmine
Base: vanilla, patchouli, ambergris, musk

WITH A FLORAL NOTE

PURE ROYAL 709
170709 |

Type:
refreshing, transparent, independent

Fragrance notes:
Head: bergamot, lemon, neroli, marigold
Heart: violet, jasmine, cyclamen
Base: black amber, musk, vetiver, cedarwood

PURE ROYAL 714
170714 |

Type:
fresh, serene, transparent

Fragrance notes:
Head: bergamot, lime, apple blossom, juicy pear
Heart: jasmine, rose, black pepper
Base: musk, sandalwood, heliotrope

ORIENTAL

strong and untamed

WITH A FLORAL NOTE

PURE ROYAL 171
170171 |

Type:
expressive, intense, captivating

Fragrance notes:
Head: pineapple, nectarine, juicy pear
Heart: pink peony, freesia, frangipani
Base: musk, sandalwood, patchouli, tonka bean, vanilla

PURE ROYAL 809
170809 |

Type:
sophisticated and tasteful

Fragrance notes:
Head: bergamot, ginger, water notes
Heart: incense, rose, patchouli
Base: musk, vanilla, vetiver

PURE ROYAL 820
170820 |

Type:
sensual, provocative, magnetic

Fragrance notes:
Head: orange blossom, peach
Heart: ylang-ylang, rose
Base: sandalwood, ambergris, vanilla, musk

PURE ROYAL 834
170834 |

Type:
warm, creamy, enveloping

Fragrance notes:
Head: bergamot, lily of the valley
Heart: rose, coconut, lily
Base: benzoin resin, amber, wood, vanilla, sandalwood

WITH A FRUITY NOTE

PURE ROYAL 286
170286 |

Type:
sexy, sophisticated

Fragrance notes:
Head: bergamot
Heart: rose, patchouli
Base: ambergris, orange

ORIENTAL

strong and untamed

WITH A WOODY NOTE

PURE ROYAL 142
170142 |

Type:
provocative, addictive

Fragrance notes:
Head: blackberry, mandarin leaves
Heart: rose, tuberose, orange blossom
Base: sandalwood, tonka bean, vanilla

PURE ROYAL 162
170162 |

Type:
classical, slightly sweet

Fragrance notes:
Head: floral honey
Heart: rose, vanilla
Base: musk, patchouli

PURE ROYAL 359
170359 |

Type:
magnetic, intense

Fragrance notes:
Head: jasmine, heliotrope
Heart: iris root, cashmere wood
Base: ambergris, vanilla

WITH A SPICY NOTE

PURE ROYAL 366
170366 |

Type:
rebellious, urban, sexy, edgy

Fragrance notes:
Head: pink pepper, orange blossom, pear
Heart: coffee, jasmine
Base: vanilla, patchouli, cedarwood

WOODY

sophisticated and classy

WITH A FRUITY NOTE

PURE ROYAL 358
170358 |

Type:
ultra-feminine, delightful

Fragrance notes:
Head: bergamot, blackcurrant
Heart: jasmine, lily of the valley
Base: cedarwood, sandalwood, tonka bean, vanilla

WITH A FLORAL NOTE

PURE ROYAL 825
170825 |

Type:
elegant, not obvious

Fragrance notes:
Head: bergamot, lavender, wormwood
Heart: balsam fir, jasmine, cedarwood
Base: oakmoss, musk, vanilla

CHYPRE

sensual and tempting

WITH A FRUITY NOTE

PURE ROYAL 362
170362 |

Type:
overwhelming, seductive

Fragrance notes:
Head: blackcurrant leaf
Heart: rose, freesia
Base: patchouli, vanilla, ambroxan, woody notes

PURE ROYAL 804
170804 |

Type:
bold, modern, full of charm

Fragrance notes:
Head: mandarin, blackcurrant, bamboo leaves
Heart: rose, peony, orange blossom
Base: patchouli, praline, musk

PURE ROYAL 811
170811 |

Type:
fresh, frivolous, comfortable

Fragrance notes:
Head: bergamot, pear, raspberry
Heart: jasmine, orange blossom, rose
Base: amber, patchouli, musk

PURE ROYAL 829
170829 |

Type:
stylish, adds self-confidence

Fragrance notes:
Head: mandarin, lemon, nectarine
Heart: pepper, freesia, peony
Base: caramel, musk, vanilla, sandalwood

WITH A FLORAL NOTE

PURE ROYAL 802
170802 |

Type:
provocative, sensual, extraordinary

Fragrance notes:
Head: grapefruit, pink peppercorn, sea water chord
Heart: geranium, jasmine, rose
Base: patchouli, musk, vanilla

PURE ROYAL 803
170803 |

Type:
sensual, seductive, scandalous

Fragrance notes:
Head: orange, honey, wild peach

Heart: gardenia, orange blossom, iris
Base: patchouli, vanilla, amber

PURE ROYAL 819
170819 |

Type:
sophisticated, modern, elegant

Fragrance notes:
Head: red pepper, bergamot, plum blossom
Heart: Turkish rose, wild jasmine, patchouli
Base: leather, ambergris, oakmoss, sandalwood, tonka bean, vanilla



PURE ROYAL
Perfume

50 ml | Fragrance: 20%

\$ 60

CHYPRE

sensual and tempting

WITH A FRUITY NOTE

PURE ROYAL 169
170169 |

Type:
relaxing, spicy

Fragrance notes:
Head: Sicilian mandarin
Heart: rosemary, rosewood, Sichuan pepper
Base: incense, oakmoss

ORIENTAL

strong and untamed

WITH A FRUITY NOTE

PURE ROYAL 813
170813 |

Type:
touching, timeless

Fragrance notes:
Head: jasmine, lemon, mint, bergamot
Heart: wormwood, lavender, coffee
Base: musk, sandalwood, tonka bean, patchouli, vanilla, amber, moss

PURE ROYAL 830
170830 |

Type:
strong, for self-confident men

Fragrance notes:
Head: green apple, mandarin
Heart: orange blossom, lavender, carrot seeds, rum accord, nutmeg
Base: leather, vanilla, tonka bean, cedarwood

WITH A SPICY NOTE

PURE ROYAL 199
170199 |

Type:
rich, multi-dimensional

Fragrance notes:
Head: Italian mandarin, peppermint
Heart: cinnamon, Turkish rose, cardamom
Base: leather notes

PURE ROYAL 815
170815 |

Type:
bold, voluptuous, magnetic, vibrant

Fragrance notes:
Head: ginger, thyme, bergamot, grapefruit, resin, lemon
Heart: liqueur, apple, cinnamon, pepper, vanilla, lavender, geranium
Base: sugar, vetiver, myrrh, olibanum, amber, musk, oakmoss, leather

PURE ROYAL 832
170832 |

Type:
uncompromising, blunt

Fragrance notes:
Head: black pepper, lavender
Heart: iris, clove, cinnamon
Base: black vanilla, patchouli

WITH A WOODY NOTE

PURE ROYAL 301
170301 |

Type:
energetic, powerful

Fragrance notes:
Head: mandarin, lemon
Heart: cedarwood, coriander
Base: ambergris, labdanum

PURE ROYAL 326
170326 |

Type:
seductive, sensual

Fragrance notes:
Head: birch leaves
Heart: cardamom, African violet
Base: woody notes, musk

PURE ROYAL 335
170335 |

Type:
distinct, modern

Fragrance notes:
Head: rosewood, cardamom, pepper
Heart: vetiver, oud
Base: vanilla, ambergris

PURE ROYAL 812
170812 |

Type:
powerful, modern, sophisticated

Fragrance notes:
Head: bergamot, black pepper, nutmeg
Heart: monoi oil, thyme, lavender
Base: cedarwood, patchouli, musk

PURE ROYAL 821
170821 |

Type:
energising, charismatic, seductive

Fragrance notes:
Head: grapefruit, plum, driftwood
Heart: hazelnut, cedarwood, white honey
Base: patchouli, moss, dry wood

PURE ROYAL 822
170822 |

Type:
bold, multi-dimensional, addictive

Fragrance notes:
Head: mandarin, incense, pepper
Heart: water notes, lavender, plum
Base: cedarwood, sandalwood, vetiver, amber

PURE ROYAL 837
170837 |

Type:
cheeky, extraordinary, surprising

Fragrance notes:
Head: bergamot, black pepper, white pepper
Heart: cedarwood, sage
Base: tonka bean, amberwood, cocoa

WITH AN AMBERGRIS NOTE

PURE ROYAL 823
170823 |

Type:
decadent, luxurious, controversial

Fragrance notes:
Head: wild lavender, clary sage
Heart: vanilla blossom, iris, almond
Base: cashmere musk, tonka bean, leather, ambergris

WITH A GOURMAND NOTE

PURE ROYAL 839
170839 |

Type:
sensual, powerful, full of love

Fragrance notes:
Head: cardamom, pink pepper, mint, sage
Heart: violet, leaves, orange blossom, lavender, pineapple
Base: vanilla, cedarwood, amber, guaiac wood



PURE ROYAL
Perfume

50 ml | Fragrance: 20%

\$ 60



PURE ROYAL
Perfume

50 ml | Fragrance: 20%

\$ 60

WOODY

sophisticated and classy

WITH A FRUITY NOTE

PURE ROYAL 195
170195 |

Type:
noble, classic

Fragrance notes:
Head: coriander, basil
Heart: cardamom
Base: cedarwood, ambergris, tobacco

PURE ROYAL 824
170824 |

Type:
fresh, free, transparent

Fragrance notes:
Head: lime zest, green mandarin
Heart: grapefruit blossom, candied ginger, yellow mandarin
Base: vetiver, white musk, amberwood

WITH A PATCHOULI NOTE

PURE ROYAL 160
170160 |

Type:
mild, surprising

Fragrance notes:
Head: tomato leaves, water flowers, blackcurrant
Heart: black pepper, rose
Base: patchouli

PURE ROYAL 198
170198 |

Type:
flamboyant, expressive

Fragrance notes:
Head: bergamot
Heart: black pepper, tobacco
Base: patchouli, cypress

PURE ROYAL 327
170327 |

Type:
untamed, powerful

Fragrance notes:
Head: grapefruit, pink pepper
Heart: nutmeg, ginger, jasmine
Base: vetiver, patchouli, labdanum

PURE ROYAL 334
170334 |

Type:
refreshing, with a hint of spice

Fragrance notes:
Head: grapefruit, orange
Heart: geranium leaves, black pepper, pink pepper
Base: cedarwood, vetiver, patchouli

WITH A VETIVER NOTE

PURE ROYAL 151
170151 |

Type:
sophisticated, impressive

Fragrance notes:
Head: lemon, bergamot, ginger
Heart: cedarwood, amber
Base: geranium, musk

PURE ROYAL 152
170152 |

Type:
elegant, harmonious

Fragrance notes:
Head: bergamot
Heart: pepper, incense, leather, tobacco
Base: cedarwood

WITH A CHYPRE NOTE

PURE ROYAL 838
170838 |

Type:
imperious, expressive, relentless

Fragrance notes:
Head: bergamot, neroli
Heart: orange blossom, cedarwood
Base: leather, white musk, amber, ambergris, woody notes

FOUGERE

seductive and classic

WITH A FERN NOTE

PURE ROYAL 332
170332 |

Type:
light, full of energy

Fragrance notes:
Head: green apple, mint, mandarin
Heart: ginger, sage, fern
Base: oakmoss, musk, sandalwood

WITH A LAVENDER NOTE

PURE ROYAL 300
170300 |

Type:
light, dynamic

Fragrance notes:
Head: bergamot, lemon, grapefruit
Heart: ginger, lavender
Base: Atlas cedarwood

PURE ROYAL 814
170814 |

Type:
intense, magnetic, dynamic

Fragrance notes:
Head: ginger, cardamom, anise, apple
Heart: cinnamon, lavender, absinthe, plum, violet
Base: cedarwood, dry wood, amber, vanilla, tonka bean, musk

PURE ROYAL 831
170831 |

Type:
transparent, fresh, mild

Fragrance notes:
Head: bergamot, mandarin, green notes
Heart: lavender, rhubarb, apple blossom
Base: sandalwood, oakmoss, cedarwood, musk

PURE ROYAL 849
170849 |

Type:
classic, bright

Fragrance notes:
Head: mandarin, grapefruit, cistus, pepper, rosemary
Heart: patchouli, ginger, lavender, cedarwood, geranium
Base: benzoin resin, vetiver, amber, musk, dry wood

CITRUS

joyful and energetic

WITH AN ORIENTAL NOTE

PURE ROYAL 840
170840 |

Type:
attractive, bright, multi-dimensional

Fragrance notes:
Head: ginger, mandarin, lemon, basil, bergamot, violet leaf
Heart: orange flower, pepper, tobacco leaf, grapefruit flower
Base: amber, patchouli, oakmoss, vetiver, cedar wood, leather



Perfumed Body **BALM**

PERFUMED BODY BALM

Envelops the skin with a scent of the most beautiful perfumes. It contains moisturising and active regenerating ingredients.

- with vitamin E, B5 and allantoin

300 ml

\$ **30**

FOR HER:
366 (506366)



HARMONIOUS FRAGRANCES

Each of the cosmetics in this series has a unique fragrance that integrates harmoniously with the most popular PURE ROYAL perfumes. You will definitely find your favorite among them.



Air FRESHENER

AIR FRESHENER

The original fragrance composition smells as beautiful as your favourite PURE ROYAL perfumes. Gradually releases a distinct fragrance.

- with a convenient elastic band to hang
- ideal for various interiors, e.g. home, office or car

9,5 g, 10,5 g

\$ **13**

FOR HER:
708052 | PURE ROYAL 809 |

FOR HIM:
708053 | PURE ROYAL 823 |

UNISEX:
708054 | PURE ROYAL 900 |



Wardrobe FRAGRANCE

WARDROBE FRAGRANCE

Unique perfume compositions in your wardrobe, bedroom and office.

- gradually release the scent

14,2 g, 15,2 g

\$ **13**

FOR HER:
708037 | PURE ROYAL 366 |
708043 | PURE ROYAL 809 |

FOR HIM:
708038 | PURE ROYAL 335 |
708045 | PURE ROYAL 823 |

UNISEX:
708055 | PURE ROYAL 900 |

HOME RITUAL Fragrance

FRAGRANCE HOME RITUAL

They enable you to experience an exceptional scented home ritual every day. Allow yourself a bit of luxury with the unique scents in a beautiful setting.

- sophisticated fragrance compositions will fill your room with a unique, long-lasting scent
- elegant design
- long-lasting – up to 70 days

100 ml

\$ **74**

FOR HER:

718366 | PURE ROYAL 366 |

718809 | PURE ROYAL 809 |

FOR HIM:

718335 | PURE ROYAL 335 |

UNISEX:

718900 | PURE ROYAL 900 |

718910 | PURE ROYAL 910 |



STYLISH DESIGN, UNIQUE FRAGRANCE

A woman with long, dark, wavy hair is captured in a dynamic pose, dancing or twirling. She is wearing a long, flowing white dress with long sleeves and a high collar. Her head is tilted back, and her hair is caught in motion, suggesting a strong breeze or a fast spin. The setting is an interior space with a rustic brick wall on the left and large windows on the right. Sunlight streams in from the windows, creating a warm, golden glow and casting long shadows on the floor. The overall mood is ethereal and graceful.

FEDERICO MAHORA

PURE
H O M E

Pure

It is the second world of FM WORLD that welcomes you with subtle fragrances and the possibility of being transferred to another world. Feel free with the fragrances that you have known for so long and are so dear to you. Taste your favorite fragrances in unique products...

FLORAL

sensual and romantic

WITH A FRUITY NOTE

PURE 10
100010 |
Type:
warm, sweet
Fragrance notes:
Head: mandarin, ivy leaves, champaca flowers
Heart: jasmine, African orchid, rose
Base: amaranth wood, blackberry, musk

PURE 17
100017 |
Type:
stimulating, friendly
Fragrance notes:
Head: melon, peach, apple
Heart: freesia, lily, mimosa, tuberose, jasmine
Base: cedarwood, ylang-ylang, musk

PURE 25
100025 |
Type:
harmonious, slightly brash
Fragrance notes:
Head: green apple, water accents
Heart: jasmine, freesia, iris, passiflora
Base: sandalwood, cedarwood, vanilla

PURE 180
100180 |
Type:
seductive, changeable
Fragrance notes:
Head: lychee, raspberry, rose
Heart: freesia, lily of the valley, cedarwood
Base: vanilla, ambergris, vetiver

PURE 420
100420 |
Type:
seductively sweet, tempting
Fragrance notes:
Head: red fruits, mandarin
Heart: lily of the valley, peony
Base: praline, amber, musk, caramel

PURE 427
100427 |
Type:
joyful, captivating
Fragrance notes:
Head: raspberry, bergamot
Heart: rose, iris, violet
Base: patchouli

PURE 437
100437 |
Type:
seductive, full of sweetness
Fragrance notes:
Head: bergamot, strawberry, fresh flowers
Heart: peach, Osmanthus, raspberry macaroons
Base: cocoa, amber, vanilla

PURE 438
100438 |
Type:
sweet, feminine, subtle
Fragrance notes:
Head: apple flower, nectarine, pear
Heart: jasmine, peony, heliotrope
Base: brown sugar, olibanum, vanilla, musk

PURE 443
100443 |
Type:
elegant, tempting, warm
Fragrance notes:
Head: orange, bergamot, blackcurrant
Heart: jasmine, orange flower, ylang-ylang, lily of the valley
Base: cedarwood, sandalwood, vanilla

PURE 447
100447 |
Type:
expressive, charming, serene
Fragrance notes:
Head: exotic fruits, red fruits, bergamot, yellow plum, pink berries
Heart: lily of the valley, freesia, rose, jasmine, peach
Base: patchouli, moss, musk, amberwood, sandalwood

PURE 449
100449 |
Type:
multi-dimensional, thrilling, full of charm
Fragrance notes:
Head: lemon, mandarin, pear, bergamot, liquorice, rhubarb, peach, pineapple, coconut, plum, grapefruit, cardamom
Heart: jasmine sambac, rose, lily of the valley, orange tree, sunny notes, violet, geranium, wine lees
Base: vanilla, gourmand, patchouli, musk, sandalwood, cedarwood, dry wood

PURE 486
100486 |
Type:
sweet, girly, appetising
Fragrance notes:
Head: pink pepper, raspberry, bergamot
Heart: peony, rose, lily of the valley, iris
Base: sandalwood, patchouli, cedarwood, musk

PURE 700
100700 |
Type:
feminine, sensual
Fragrance notes:
Head: lemon, apple, violet leaves
Heart: peony, lily of the valley
Base: cedarwood, musk, amber

PURE 716
100716 |
Type:
sweet, charming, carefree
Fragrance notes:
Head: mandarin, lemon, blackberry, blackcurrant
Heart: jasmine, magnolia, water notes
Base: musk, cedar wood, sandalwood

WITH A CHYPRE NOTE

PURE 485
100485 |
Type:
surprising, ambiguous
Fragrance notes:
Head: lemon, blackcurrent, cranberry leaves
Heart: rose, orange blossom, jasmine, peach
Base: patchouli, cedarwood, amber, vanilla, tonka bean, oakmoss, musk

PURE 493
100493 |
Type:
seductive, lovely
Fragrance notes:
Head: raspberry, blackcurrant, pear, orange
Heart: rose, freesia
Base: vanilla, musk, cashmere, patchouli

PURE 706
100706 |
Type:
soft, powdery, romantic
Fragrance notes:
Head: bergamot, violet leaves, coriander
Heart: peach, water lily, rose, violet, narcissus
Base: vetiver, cedarwood, sandalwood, musk

WITH A GREEN NOTE

PURE 01
100001 |
Type:
cool and warm at the same time
Fragrance notes:
Head: lemon, tea, cranberry
Heart: jasmine, peony, water lily
Base: woody notes, patchouli

PURE 81
100081 |
Type:
eccentric but subtle
Fragrance notes:
Head: green apple, cucumber, magnolia
Heart: lily of the valley, rose, violet
Base: sandalwood, ambergris

WITH A WOODY NOTE

PURE 414
100414 |
Type:
independent, very feminine
Fragrance notes:
Head: cactus
Heart: pink freesia, jasmine, rose
Base: cedarwood, woody notes

PURE 445
100445 |
Type:
joyful, vibrating, juicy
Fragrance notes:
Head: mandarin, bergamot, nectarine
Heart: rose, jasmine, honeysuckle, water lily
Base: sandalwood, patchouli, cedarwood, vanilla, musk

WITH A WATER NOTE

PURE 07
100007 |
Type:
balanced, mild
Fragrance notes:
Head: pineapple, peony, sweet pea
Heart: freesia, jasmine, lily
Base: sandalwood, cedarwood, musk

PURE 174
100174 |
Type:
magical, flickering
Fragrance notes:
Head: freesia, lychee
Heart: lily, magnolia, jasmine, ginger, pepper
Base: amber, musk

PURE 488
100488 |
Type:
delicate, radiant, elegant
Fragrance notes:
Head: grapefruit, bergamot, lychee, water notes
Heart: rose, jasmine, magnolia, clove
Base: sandalwood, ambergris, oakmoss, cedarwood, musk

PURE 701
100701 |
Type:
magnetic, sensual
Fragrance notes:
Head: pineapple, rhubarb, apple
Heart: jasmine, lily of the valley, freesia
Base: musk, peach



PURE
Perfume

50 ml | Fragrance: 20%

\$ 39

FLORAL

sensual and romantic

WITH A CITRUS NOTE

PURE 491
100491 |

Type:
serene, carefree

Fragrance notes:
Head: ylang-ylang, lemon, sea breeze
Heart: jasmine, rose, orange blossom
Base: plum, cashmeran, musk

PURE 702
100702 |

Type:
expressive, full of passion

Fragrance notes:
Head: mandarin, bergamot, water notes
Heart: jasmine, geranium, lily of the valley
Base: musk, amber

WITH AN ALDEHYDE NOTE

PURE 21
100021 |

Type:
classic, warm, enveloping

Fragrance notes:
Head: aldehyde, ylang-ylang, orange blossom
Heart: rose, lily of the valley, iris
Base: civet, oakmoss, sandalwood

WITH AN ORIENTAL NOTE

PURE 20
100020 |

Type:
seductive, sensual

Fragrance notes:
Head: Osmanthus, black tea, bergamot
Heart: rose, freesia, magnolia, orchid
Base: musk, patchouli

PURE 97
100097 |

Type:
delightful, velvety

Fragrance notes:
Head: freesia, lily of the valley, rose
Heart: lily, gardenia, palm tree, narcissus
Base: blackcurrant, musk, oakmoss

PURE 132
100132 |

Type:
exclusive, intense

Fragrance notes:
Head: ginger, cardamom, pepper, orange
Heart: tuberose, coconut, gardenia, peony
Base: ambergis, musk

PURE 183
100183 |

Type:
sharp, strong

Fragrance notes:
Head: cranberry, pink pepper, tamarind
Heart: black violet, cocoa, rose, hellebore
Base: patchouli, vanilla, Massoia wood

PURE 239
100239 |

Type:
vibrating, intense

Fragrance notes:
Head: cardamom, pink pepper, mandarin
Heart: iris, campanula, Ceylon
Base: cedarwood, vetiver, musk

PURE 434
100434 |

Type:
audacious, addictive

Fragrance notes:
Head: orange, grapefruit, liquorice
Heart: rose, orange blossom, lily of the valley, iris
Base: sandalwood, vanilla, musk

PURE 444
100444 |

Type:
tempting, surprising, warm

Fragrance notes:
Head: bergamot, pear, sweet orange
Heart: rose, iris, violet, ylang-ylang
Base: vanilla, musk, patchouli, coffee

PURE 446
100446 |

Type:
rebellious, sensual

Fragrance notes:
Head: bergamot, apple, hyacinth, petitgrain
Heart: orange blossom, jasmine, tuberose, rose
Base: cedarwood, vanilla, musk, cashmere wood, dry amber, heliotrope

PURE 487
100487 |

Type:
fantasy, sensual, alluring

Fragrance notes:
Head: pink pepper, raspberry, blackcurrent, apple
Heart: rose, peony, clove, iris
Base: patchouli, sandalwood, musk, vanilla

PURE 489
100489 |

Type:
futuristic, eccentric

Fragrance notes:
Head: green leaves, anise, blackcurrent
Heart: orange blossom, water notes, lily of the valley, cashmere wood
Base: cedarwood, patchouli, tonka bean, ambergis



PURE
Perfume

50 ml | Fragrance: 20%

\$ 39



ORIENTAL

strong and untamed

WITH A FLORAL NOTE

PURE 09
100009 |
Type: deeply memorable, magical
Fragrance notes:
Head: violet, cardamom, green fruits
Heart: almond, jasmine
Base: vanilla, musk

PURE 101
100101 |
Type: sophisticated, unforgettable
Fragrance notes:
Head: orange blossom, pear
Heart: ginger, incense
Base: sandalwood, vanilla, honey, musk

PURE 257
100257 |
Type: exquisite, surprising
Fragrance notes:
Head: rose, honeysuckle, mandarin
Heart: daisy, jasmine
Base: musk, patchouli

PURE 431
100431 |
Type: cheeky, sensual, alluring
Fragrance notes:
Head: bergamot, apple
Heart: jasmine, lily of the valley
Base: tonka bean, musk

PURE 436
100436 |
Type: charming, rebellious
Fragrance notes:
Head: coconut, hazelnut, lily of the valley
Heart: orange blossom, rose
Base: cashmere wood, vanilla, amber

PURE 440
100440 |
Type: exquisite, sensual
Fragrance notes:
Head: blackcurrant, hazelnut, peach, rhubarb
Heart: iris, orange blossom, caramel, coconut
Base: vanilla, patchouli, musk

PURE 441
100441 |
Type: fresh, liberated
Fragrance notes:
Head: bergamot, lavender, ylang-ylang
Heart: jasmine, iris
Base: vanilla, sandalwood, musk

PURE 442
100442 |
Type: warm, spicy, intriguing
Fragrance notes:
Head: rose, orange flower, pear
Heart: coffee, jasmine, peach
Base: vanilla, patchouli, cedarwood

PURE 492
100492 |
Type: light, powdery
Fragrance notes:
Head: rhubarb, narcissus
Heart: almond, milk
Base: cashmere, cedarwood

PURE 717
100717 |
Type: enticing, rebellious
Fragrance notes:
Head: pepper, fresh flowers, water musk
Heart: jasmine, white musk
Base: sandalwood, cashmere, frozen musk

WITH A WOODY NOTE

PURE 26
100026 |
Type: warming, enveloping
Fragrance notes:
Head: guava, raspberry, bergamot, coconut
Heart: water lily, rose, pepper, magnolia
Base: sandalwood, vanilla, coffee, caramel

PURE 448
100448 |
Type: surprising, seductive, with a hint of sweetness
Fragrance notes:
Head: rose petals, saffron blossom, white woods
Heart: jasmine sambac, plum, vanilla planifolia
Base: vetiver, amber, musk

WITH A SPICY NOTE

PURE 24
100024 |
Type: exotic, very spicy
Fragrance notes:
Head: mandarin, cumin, clove
Heart: mango, heliotrope, cardamom
Base: musk, vanilla, ambergris

PURE 173
100173 |
Type: dreamlike, dimmed
Fragrance notes:
Head: anise, liquorice
Heart: Jacaranda wood, bitter almond
Base: sandalwood, musk, moss

PURE 177
100177 |
Type: triggering desires, warm
Fragrance notes:
Head: bergamot, bay leaf, pink pepper
Heart: saffron, orange blossom
Base: incense, vanilla, sandalwood

WITH A FRUITY NOTE

PURE 12
100012 |
Type: hypnotising, seductive
Fragrance notes:
Head: passiflora
Heart: jasmine, gardenia
Base: vanilla, maple, vetiver

PURE 32
100032 |
Type: fascinating, ambiguous
Fragrance notes:
Head: melon, coconut, mandarin, candy floss
Heart: blackberry, mango, plum, honey
Base: vanilla, chocolate, toffee

PURE 98
100098 |
Type: fresh, subtle
Fragrance notes:
Head: blackcurrant, bergamot, lemon
Heart: jasmine, lily of the valley, rose
Base: sandalwood, cedarwood, amber

PURE 237
100237 |
Type: provocative, flirty
Fragrance notes:
Head: exotic fruits, blackcurrant
Heart: peony, jasmine, plum
Base: vanilla, musk, ambergris

PURE 413
100413 |
Type: very sweet, slightly flirtatious
Fragrance notes:
Head: blackcurrant, pear
Heart: iris, jasmine, orange blossom
Base: chocolate pralines, patchouli, vanilla



PURE 426
100426 |
Type: bold, addictive
Fragrance notes:
Head: bergamot, neroli
Heart: orange blossom, raspberry, jasmine
Base: patchouli, vanilla, cashmere wood

PURE
Perfume

50 ml | Fragrance: 20%

\$ 39



PURE
Perfume

50 ml | Fragrance: 20%

\$ 39

CITRUS

joyful and energetic

WITH A FRUITY NOTE

PURE 419
100419 |

Type:
optimistic, casual

Fragrance notes:
Head: citrus fruits, grapefruit, bergamot,
water notes, calone, melon, peach
Heart: woody notes, jasmine, lily of the
valley
Base: musk, ambergris

WITH A LEMON NOTE

PURE 33
100033 |

Type:
refreshing, joyful

Fragrance notes:
Head: mango, Sicilian lemon, apple
Heart: jasmine, bamboo, white rose
Base: cedarwood, ambergris

WITH A MANDARIN NOTE

PURE 23
100023 |

Type:
sensual, with a bit of sweetness

Fragrance notes:
Head: lily of the valley, red orange
Heart: mandarin, jasmine, rose
Base: vanilla, sandalwood, white musk

WITH AN ORANGE NOTE

PURE 06
100006 |

Type:
ethereal, discrete

Fragrance notes:
Head: lemon, bergamot, mint
Heart: orange, green tea
Base: oakmoss, ambergris

WITH AN ORIENTAL NOTE

PURE 484
100484 |

Type:
bright and impressive at the same time

Fragrance notes:
Head: mandarin, orange, nutmeg, clove
Heart: orange blossom, jasmine, tuberose,
lavender
Base: vanilla, labdanum, patchouli,
sandalwood

CHYPRE

sensual and tempting

WITH A FLORAL NOTE

PURE 432
100432 |

Type:
chic, full of charm

Fragrance notes:
Head: mandarin, bergamot, green notes
Heart: rose, jasmine
Base: woody notes, musk

WITH A WOODY NOTE

PURE 18
100018 |

Type:
radiant, alluring

Fragrance notes:
Head: orange, orange blossom
Heart: rose, jasmine, ylang-ylang
Base: white musk, vetiver, tonka bean,
vanilla

WITH A FRUITY NOTE

PURE 05
100005 |

Type:
intriguing, modern

Fragrance notes:
Head: freesia, gardenia
Heart: sandalwood, rose, coriander
Base: vanilla, vetiver, patchouli

PURE 16
100016 |

Type:
fabulous, fascinating

Fragrance notes:
Head: mandarin, pear, green notes
Heart: orchid
Base: patchouli, toffee

PURE 34
100034 |

Type:
free, joyful

Fragrance notes:
Head: iris, pineapple, hyacinth, pink
pepper
Heart: jasmine, lemon
Base: vanilla, vetiver, musk

PURE 80
100080 |

Type:
surprising, appetising

Fragrance notes:
Head: strawberry sorbet, cherry,
pineapple
Heart: caramel popcorn, violet, rose
Base: musk, ambergris, patchouli

PURE 372
100372 |

Type:
elegant, classic, balanced

Fragrance notes:
Head: patchouli, green apple, bergamot,
lemon, pink pepper
Heart: sandalwood, rose, musk
Base: peach, blackcurrant, lily, ylang-ylang,
amber

WOODY

sophisticated and classy

WITH AN ORIENTAL NOTE

PURE 703
100703 |

Type:
fresh, light, joyful

Fragrance notes:
Head: lemon, blackcurrant, cranberry, tea
leaves
Heart: water lily, rose, white peony
Base: vanilla, patchouli, musk

WITH A FLORAL NOTE

PURE 241
100241 |

Type:
seductive, comfortable, full of charm

Fragrance notes:
Head: bergamot
Heart: ylang-ylang, Casablanca lily, orange
blossom
Base: sandalwood, amber resin, vanilla



PURE
Perfume

50 ml | Fragrance: 20%
\$ 39



ORIENTAL

strong and untamed

WITH A FOUGERE NOTE

PURE 494
100494 |

Type:
transparent, bright

Fragrance notes:
Head: orange, cinnamon
Heart: iris, vetiver, chestnut
Base: cashmere, tonka bean

PURE 496
100496 |

Type:
powerful but fresh

Fragrance notes:
Head: apple, black pepper, bergamot
Heart: cinnamon, cardamom
Base: musk, vetiver, chestnut

WITH A CITRUS NOTE

PURE 495
100495 |

Type:
transparent, inviting

Fragrance notes:
Head: mandarin
Heart: coconut water
Base: amber

WOODY

sophisticated and classy

WITH A CITRUS NOTE

PURE 497
100497 |

Type:
positive, elegant

Fragrance notes:
Head: grapefruit, mandarin, lemon, pepper
Heart: juniper, cedarwood, chilli, geranium
Base: patchouli, vetiver, moss, woody and
amber notes

CHYPRE

sensual and tempting

WITH A FRUITY NOTE

PURE 498
100498 |

Type:
transparent, trustworthy

Fragrance notes:
Head: bergamot, melon, elemi resin,
pineapple, orange, blackcurrant, lemon,
apple, pink pepper
Heart: rose, lily of the valley, absinth,
lavender, cardamom
Base: cedarwood, moss, leather, Haitian
vetiver, patchouli, dry wood, musk

ORIENTAL

strong and untamed

WITH A SPICY NOTE

PURE 224
100224 |

Type:
sweet, seductive

Fragrance notes:
Head: bergamot, grapefruit, grass
Heart: saffron, violet, nutmeg, jasmine
Base: cane sugar, vanilla, ambergris

PURE 466
100466 |

Type:
sexy, intriguing, smoky

Fragrance notes:
Head: bergamot, basil, lavender, orange, lemon
Heart: apple blossom, heliotrope, water notes, watermelon, clove
Base: musk, cedarwood, tonka bean, sandalwood, guaiac wood

PURE 719
100719 |

Type:
transparent, surprising

Fragrance notes:
Head: cypress, cardamom
Heart: cashmere, sage
Base: neroli, leather, patchouli

WITH A FLORAL NOTE

PURE 52
100052 |

Type:
thrilling, spirited

Fragrance notes:
Head: apple, bergamot, mint
Heart: jasmine, geranium, lavender
Base: cinnamon, clove, musk

PURE 465
100465 |

Type:
suggestive, aromatic

Fragrance notes:
Head: cardamom, bergamot, lemon, mint, orange
Heart: sage, lavender, orange blossom, tonka bean, petitgrain
Base: sandalwood, vanilla, ambergris, musk

PURE 481
100481 |

Type:
modern, flamboyant, extravagant
rebellious

Fragrance notes:
Head: bergamot, cypress, fresh flowers
Heart: iris, lavender, Blonde Woods
Base: amber, iris, musk

WITH AN AMBERGRIS NOTE

PURE 64
100064 |

Type:
tasteful, sensual

Fragrance notes:
Head: mandarin, cedarwood, anise
Heart: rosemary, olive tree flowers
Base: musk, guaiacum, tonka bean

WITH A WOODY NOTE

PURE 471
100471 |

Type:
mysterious, extravagant

Fragrance notes:
Head: mandarin, orange
Heart: cinnamon, tobacco, clove
Base: patchouli, tonka bean, myrrh

PURE 475
100475 |

Type:
warm, attractive

Fragrance notes:
Head: bergamot, mandarin, lemon, cardamom
Heart: lavender, jasmine, cyclamen
Base: cedarwood, musk, patchouli, tonka bean

WITH A FRUITY NOTE

PURE 478
100478 |

Type:
invigorating, passionate, modern

Fragrance notes:
Head: grapefruit, yuzu, orange, green apple
Heart: geranium, ginger, watermelon, cinnamon, cloves
Base: cedarwood, sandalwood, vetiver, amber

PURE 482
100482 |

Type:
stimulating, fresh, thrilling

Fragrance notes:
Head: lemon, yellow mandarin, pineapple, apple, bergamot, green leaves, grapefruit
Heart: nutmeg, black pepper, saffron, ginger, orange tree, cardamom
Base: vanilla, cedarwood, amber, dry wood, styrax, patchouli, tonka bean, Haitian vetiver

CITRUS

joyful and energetic

WITH A LEMON NOTE

PURE 57
100057 |

Type:
full of sun, magnificent

Fragrance notes:
Head: plum, apple, bergamot
Heart: cinnamon, pink pepper
Base: vanilla, Jamaican rum

WITH AN ORANGE NOTE

PURE 93
100093 |

Type:
modern, vibrant

Fragrance notes:
Head: pineapple, rosemary, bergamot
Heart: cyclamen, lavender, jasmine, ginger
Base: oakmoss, ivy

WITH A MANDARIN NOTE

PURE 134
100134 |

Type:
refreshing, captivating

Fragrance notes:
Head: bitter orange, lemon, bergamot
Heart: rosemary, seagrass, violet
Base: patchouli, cedarwood, ambergris

PURE 452
100452 |

Type:
very refreshing, twinkling

Fragrance notes:
Head: aldehyde, mint, citrus fruits, water notes
Heart: neroli, cedarwood, pepper, cypress
Base: tonka bean, vanilla, vetiver

WITH A WOODY NOTE

PURE 718
100718 |

Type:
dynamic, charismatic

Fragrance notes:
Head: orange, lemon, aldehyde notes
Heart: apple, cardamom, jasmine
Base: vetiver, cedar wood, musk

WITH AN ORIENTAL NOTE

PURE 721
100721 |

Type:
transparent, positive, combative

Fragrance notes:
Head: mandarin, melon, orange, lemon, lavender, sage, green apple
Heart: coriander, jasmine, freesia, cardamom, cinnamon, pepper
Base: tonka bean, cedar wood, amber, musk, cistus



PURE
Perfume

50 ml | Fragrance: 20%

\$ 39

WOODY

sophisticated and classy

WITH A FRUITY NOTE

PURE 55
100055 |

Type:
light and elegant

Fragrance notes:
Head: coriander, apple
Heart: incense, Sichuan pepper
Base: vanilla, woody notes

PURE 472
100472 |

Type:
expressive, luxurious

Fragrance notes:
Head: bergamot, blackcurrant, lime
Heart: apple, pineapple, rosemary, elemi resin
Base: musk, patchouli, cedarwood

PURE 479
100479 |

Type:
fresh, sassy, sophisticated

Fragrance notes:
Head notes: Sicilian bergamot, Italian lemon
Heart notes: violet leaves, geranium, wild jasmine
Base notes: white musk, oakmoss, cedarwood

WITH A WATER NOTE

PURE 457
100457 |

Type:
fresh, minimalist

Fragrance notes:
Head: grapefruit, mandarin, water notes
Heart: jasmine, bay leaf
Base: ambergris, patchouli, oakmoss

PURE 474
100474 |

Type:
independent, alluring

Fragrance notes:
Head: mint, lemon
Heart: cardamom, geranium, marine notes
Base: cedarwood, musk, patchouli, sandalwood

WITH A GOURMAND NOTE

PURE 720
100720 |

Type:
exceptional, appetising, coquettish

Fragrance notes:
Head: pineapple, mugwort, lavender
Heart: ginger, coconut, pepper, spicy notes
Base: vanilla, moss, cedar wood, dry wood, gourmand notes

CHYPRE

sensual and tempting

WITH A WOODY NOTE

PURE 56
100056 |

Type:
inflaming senses, vibrating

Fragrance notes:
Head: grapefruit, lavender, nutmeg flower, honeysuckle
Heart: raspberry, heliotrope, clove
Base: cedarwood, resin, juniper

WITH AMBERGRIS AND MUSK NOTES

PURE 110
100110 |

Type:
a little brash, rebellious

Fragrance notes:
Head: lavender, bergamot, cardamom
Heart: orange blossom, lily of the valley
Base: musk, ambergris, vanilla

WITH AN ORIENTAL NOTE

PURE 490
100490 |

Type:
brave, original, sensual

Fragrance notes:
Head: juniper, bergamot, red orange
Heart: red thyme, nutmeg, sage
Base: musk, patchouli, oakmoss

WITH A WATER NOTE

PURE 704
100704 |

Type:
fresh, attractive, controversial

Fragrance notes:
Head: lemon, ginger, apple
Heart: sea breeze, lavender, geranium
Base: vetiver, tonka bean, cedarwood, amber

PURE 705
100705 |

Type:
warm, charming, pure

Fragrance notes:
Head: water notes, spicy notes, fruity notes
Heart: floral notes, woody notes, green notes
Base: musk, ambergris, moss



FOUGERE

seductive and classic

WITH A FERN NOTE

PURE 43
100043 |

Type:
energising, eye-catching

Fragrance notes:
Head: mandarin, kumquat, pink pepper
Heart: coriander, freesia, cardamom
Base: leather notes, Jacaranda tree

PURE 135
100135 |

Type:
surprising, intense

Fragrance notes:
Head: bitter orange, mandarin
Heart: santolina, seagrass
Base: ambergris, woody notes

WITH A LAVENDER NOTE

PURE 54
100054 |

Type:
ambiguous, fresh

Fragrance notes:
Head: mint, bergamot, rum
Heart: cedarwood, sage, lavender
Base: oakmoss, vetiver, suede

PURE 473
100473 |

Type:
fresh, noble, rebellious

Fragrance notes:
Head: bergamot, pink pepper
Heart: amber, lavender
Base: patchouli, vetiver, dry wood

PURE 480
100480 |

Type:
curious, harmonious, mysterious

Fragrance notes:
Head notes: lemon, bergamot, neroli
Heart notes: geranium, hyacinth, lavender, clary sage, marigold
Base notes: cedarwood, tonka bean, ambergris, oakmoss, musk

PURE 483
100483 |

Type:
mature, toned, retro

Fragrance notes:
Head: apple, mandarin, orange, cinnamon, sage
Heart: lavender, patchouli, rosemary
Base: sandalwood, olive tree



Perfumed **SHOWER GEL**

PERFUMED SHOWER GEL

Carefully cleanses the body leaving the scent of the most beautiful perfumes.

- **pampers the senses with a silky texture**
- **contains moisturising and regenerating panthenol**

300 ml
\$ **28.5**

FOR HER:
18 (507018)
20 (507020)

FOR HIM:
52 (507052)

Perfumed Body **BALM**

PERFUMED BODY BALM

Envelops the skin with a scent of the most beautiful perfumes. It contains moisturising and active regenerating ingredients.

- **with vitamin E, B5 and allantoin**

300 ml
\$ **30**

FOR HER:
18 (506018) | **20 (506020)** |



PHEROMONE

FOR HER

FLIRT

05	10	18	20
120005	120010	120018	120020

23	101	431
120023	120101	120431

SUCCESS

01	33	81	98
120001	120033	120081	120098

436	489
120436	120489

CHARM

34	413
120034	120413

FOR HIM

SEDUCTION

52	110	473
120052	120110	120473

SUCCESS

64	134	472
120064	120134	120472

SELF-CONFIDENCE

56	135	457
120056	120135	120457



PHEROMONE

Perfume

50 ml | Fragrance: 20%

\$ **42**

PHEROMONES

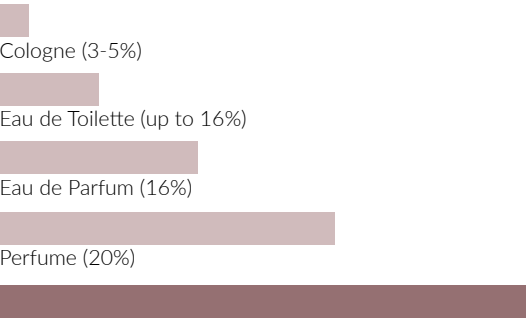
Pheromones are odourless substances added to perfume to reinforce their stimulating effect; they are the secret weapon, with a mission to boost attractiveness and self-confidence.





INTENSE Perfume

50 ml
\$ 47



INTENSE (24-30%)

FOR HER
FRAGRANCE: 30%

FLORAL
sensual and romantic

WITH A FRUITY NOTE

INTENSE 10 | 110010 |
a fragrance that provokes

INTENSE 17 | 110017 |
the power of seduction

INTENSE 25 | 110025 |
a charming composition

WITH AN ORIENTAL NOTE

INTENSE 20 | 110020 |
an explosion of passion

INTENSE 97 | 110097 |
always in style

INTENSE 489 | 110489 |
a breath of innovation

WITH A GREEN NOTE

INTENSE 81 | 110081 |
fresh and subtle

WITH AN ALDEHYDE NOTE

INTENSE 21 | 110021 |
classic

CITRUS
joyful and energetic

WITH A LEMON NOTE

INTENSE 33 | 110033 |
refreshing and energetic

WITH A MANDARIN NOTE

INTENSE 23 | 110023 |
romantic & joyful

CHYPRE
sensual and tempting

WITH A FRUITY NOTE

INTENSE 05 | 110005 |
inflames the senses

INTENSE 16 | 110016 |
enticing sweetness

WITH A WOODY NOTE

INTENSE 18 | 110018 |
slight provocation

ORIENTAL
strong and untamed

WITH A FLORAL NOTE

INTENSE 09 | 110009 |
discover the secret

INTENSE 436 | 110436 |
confidence booster

WITH A FRUITY NOTE

INTENSE 98 | 110098 |
business elegance

INTENSE 413 | 110413 |
liberated

WITH A SPICY NOTE

INTENSE 173 | 110173 |
exotic journey

FOR HIM
FRAGRANCE: 24%

CHYPRE
sensual and tempting

WITH A WOODY NOTE

INTENSE 56 | 110056 |
definitely modern

WITH AMBERGRIS AND
MUSK NOTES

INTENSE 110 | 110110 |
liberated, manly and brave

FOUGERE
seductive and classic

WITH A FERN NOTE

INTENSE 43 | 110043 |
antidote to boredom

WITH A LAVENDER NOTE

INTENSE 473 | 110473 |
rebellious soul

ORIENTAL
strong and untamed

WITH A FLORAL NOTE

INTENSE 52 | 110052 |
the definition of a twenty-first century man

WITH AN AMBERGRIS NOTE

INTENSE 64 | 110064 |
the power of elegance

CITRUS
joyful and energetic

WITH A MANDARIN NOTE

INTENSE 134 | 110134 |
the essence of lightness

WOODY
sophisticated and classy

WITH A FRUITY NOTE

INTENSE 472 | 110472 |
impresses with its character

WITH A WATER NOTE

INTENSE 457 | 110457 |
stimulates to action

Perfumed Body MIST

PERFUMED BODY MIST

Is like a sea breeze on your skin, providing an immediate refreshing effect. It leaves a beautiful scent of PURE parfum on the skin.

- contains an exquisite emollient – coconut oil dispersed in water with a skincare effect
- ideal for hot days as an alternative to perfume

150 ml
\$ 37



AVAILABLE FRAGRANCES:
18 (521018) | 20 (521020)
372 (521372)



Perfumed ANTIPERSPIRANT Roll-On

PERFUMED ANTIPERSPIRANT ROLL-ON

Thanks to a combination of antiperspirant properties and fragrance composition, it ensures a sense of comfort and freshness.

- eliminates unpleasant odour caused by excessive sweating
- do not leave marks on clothes
- alcohol-free formula
- wide range of fragrances

50 ml
\$ 23

FOR HER:
18 (508018) | 20 (508020)

FOR HIM:
52 (508052) | 199 (508199)
472 (508472) | 473 (508473)

HOME RITUAL Fragrance

FRAGRANCE HOME RITUAL

They enable you to experience an exceptional scented home ritual every day. Allow yourself a bit of luxury with the unique scents in a beautiful setting.

- sophisticated fragrance compositions will fill your room with a unique, long-lasting scent
- elegant design
- long-lasting – up to 70 days

100 ml
\$ **74**



- FOR HER:
- 718005 | PURE 05 |
 - 718018 | PURE 18 |
 - 718020 | PURE 20 |
 - 718021 | PURE 21 |
 - 718032 | PURE 32 |
 - 718081 | PURE 81 |
 - 718372 | PURE 372 |
 - 718413 | PURE 413 |
 - 718436 | PURE 436 |
 - 718489 | PURE 489 |

- FOR HIM:
- 718052 | PURE 52 |
 - 718056 | PURE 56 |
 - 718134 | PURE 134 |
 - 718472 | PURE 472 |
 - 718473 | PURE 473 |



STYLISH DESIGN,
UNIQUE FRAGRANCE

The prestigious PURE HOME line impresses not only with the unique fragrances, but also with the extremely stylish design. We chose the most beautiful fragrance compositions that will enable you to create an amazing scented home ritual to pamper the senses of your family and enchant all of your guests too.

Directions: Open the flask and insert the grass reed. After soaking, the reeds will gradually release the smell of perfume.

En home ritual fragrance is a unique combination of precious scent compositions and stylish design. They will enable you to have an exceptional scented home ritual that will cherish your senses and will take you to the magical world that smells perfection.



Air FRESHENER

AIR FRESHENER

The original fragrance composition smells as beautiful as your favourite PURE perfumes. Gradually releases a distinct fragrance.

- with a convenient elastic band to hang
- ideal for various interiors, e.g. home, office or car

9,5 g, 10,5 g

\$ 13

FOR HER:
708041 | PURE 18 |
708039 | PURE 20 |
708058 | PURE 489 |

FOR HIM:
708040 | PURE 472 |



Wardrobe FRAGRANCE

WARDROBE FRAGRANCE

Unique perfume compositions in your wardrobe, bedroom and office.

- gradually release the scent

14,2 g, 15,2 g

\$ 13

FOR HER:
708041 | PURE 18 |
708039 | PURE 20 |
708018 | PURE 23 |
708019 | PURE 33 |
708036 | PURE 413 |
708044 | PURE 436 |
708058 | PURE 489 |

FOR HIM:
708040 | PURE 472 |
708042 | PURE 473 |





FEDERICO MAHORA

Personal care products tailored to your needs

Your skin requires special attention due to stress, air pollution and the changing climate. The fast pace of life makes it easy for us to neglect it. That is why we have developed care products which, thanks to the carefully selected and concentrated ingredients, will nourish and regenerate your skin every day. It will become radiant and healthy like after the best spa treatments. The wide range of our products will ensure comprehensive skincare that will not only soothe your body but also be a true pleasure and relaxation for you.

GOLD REGENESIS

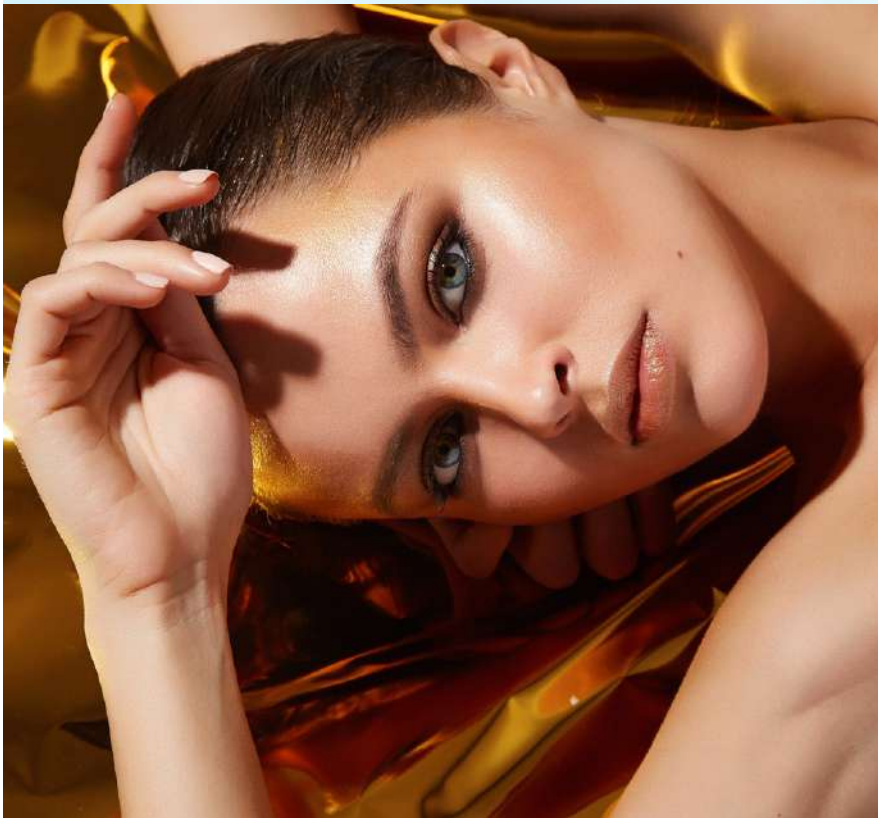
Anti-Ageing Face SCRUB

ANTI-AGEING FACE SCRUB

It effectively cleanses and refreshes the skin, leaving it smoother and gently brighter. Due to corundum crystals, it thoroughly exfoliates the calloused epidermis, ensuring the effect of cosmetic microdermabrasion.

- with liquorice which beautifully evens out the skin tone and has antioxidant properties, slowing down the skin's ageing process
- enriched by soothing, moisturising and regenerating active components
- perfectly prepares the skin for further care
- recommended for every skin type, especially for dry and mature skin

50 ml | 512007 |
\$ **63**



Shimmering Body OIL

SHIMMERING BODY OIL

It makes the skin look more radiant, silky-soft and long-lastingly moisturised. Grapeseed oil smooths, regenerates and nourishes the skin, and along with vitamin E, it slows down the ageing process. Sweet almond oil improves its flexibility, preventing the occurrence of stretch marks. Sunflower oil strengthens the lipid barrier and shows normalising properties.

- thanks to gold particles beautifully highlights the skin tone
- contains a valuable cocktail of rejuvenating components
- quickly absorbed by the skin without leaving an oily layer on it
- perfect for every skin type

100 ml | 512006 |
\$ **48.5**

Anti-Ageing Day CREAM

ANTI-AGEING DAY CREAM

Contains illuminating colloidal gold and resveratrol from red grapes, which stimulates collagen and elastin production taking care of proper skin tension.

- rescue for skin that needs tightening
- perfectly smoothes and restores skin elasticity
- contains nourishing shea butter and moisturising hyaluronic acid
- ceramide-enriched complex increases skin's natural resistance

50 ml | 512003 |
\$ **70**

COLLOIDAL GOLD

ALLY IN THE FIGHT AGAINST THE EFFECTS OF TIME

- reduces existing wrinkles and prevents the formation of new ones
- stimulates collagen and elastin synthesis taking care of proper skin tension and elasticity
- affects optimal skin hydrationfacilitates the penetration of active ingredients into deeper layers
- stimulates the exchange of microelements inside the skin contributing to its intensive nutrition
- restores your skin's natural glow and vitality
- activates skin's natural immune system increasing resistance to the harmful effects of external factors





Regenerating
& Nourishing
Hand **CREAM**

REGENERATING
& NOURISHING
HAND CREAM

Created to answer the needs of dry, damaged skin of hands exposed to harmful external factors. Intensively nourishes, smoothes the skin of hands and improves the condition of nails giving them a healthy and well-groomed look.

- **formula based on beta-glucan, rice oil, castor oil, allantoin**

50 ml | **513007** |

\$ **39**



Face
SERUM

FACE SERUM

Recommended for regular use instead of cream, especially in the morning and evening, as well as topically on areas of the face and body that require special treatment.

- **innovative, intensively acting cosmetic**
- **recommended for sensitive, tired and dry skin**
- **for every skin type**

30 ml | **513002** |

\$ **45,5**



3 in 1 Facial
CLEANSER

3 IN 1 FACIAL CLEANSER

Exceptionally light formula with a light texture. It perfectly removes even waterproof makeup. Effectively removes dirt, and tones the skin leaving your face smooth and nourished.

- **the power of ingredients: oat beta-glucan, panthenol, sweet almond oil, vitamin E, witch hazel hydrolat, rose water from damask rose**
- **does not require rinsing**

200 ml | **513001** |

\$ **33**



Anticellulite Body
BALM

ANTICELLULITE BODY BALM

Contains a unique Anticellulite Forte complex that shapes the body and strengthens tissues. If used regularly, it gradually reduces the effect of the so-called 'orange-peel' skin.

- **visibly shapes thighs, hips, buttocks and abdominal areas**
- **with the *Centella Asiatica* extract, which stimulates the production of collagen and elastin restoring skin's proper density and elasticity and preventing the formation of stretch marks**

300 ml | **513009** |

\$ **45,5**

EFFECTIVENESS OF
β-GLUCAN

CONFIRMED BY
NUMEROUS STUDIES

- provides the skin with optimum moisture
- stimulates collagen production and so it has rejuvenating and anti-ageing properties
- regenerates dry skin, soothes irritations, facilitates the healing processes
- tightens and makes the skin more elastic, firmer and smoother
- it is a natural factor protecting against UV radiation

NECTAR Body Wash

NECTAR BODY WASH

Soft and fragrant skin thanks to a gentle fluid with a delicate, oily consistency. The Nectar cleanses and nourishes the body.

- with honey extract, lactic acid and allantoin which perfectly moisturise the body
- with extract of opuntia, pear and Passiflora

220 ml | 515005 |

\$ 28.5



Sugar Body SCRUB

SUGAR BODY SCRUB

Thoroughly cleanses, smoothes and intensively nourishes the skin. Restores its softness and elasticity.

- with argan oil, which protects the skin from drying out and delays the ageing processes
- with sweet almond oil of strengthening properties, rich in magnesium, potassium, zinc and vitamins: E, PP and B complex

150 ml | 515003 |

\$ 34



Body PUDDING

BODY PUDDING

Long-lasting and intense moisturisation as well as satin-like softness. Wonderfully fragrant butter with an exceptionally fluffy texture. It spreads pleasantly and absorbs quickly.

- with sweet almond oil and honey extract, which provide perfect moisturisation
- with shea butter, which nourishes the skin

130 ml | 515004 |

\$ 30



LIQUID HONEY CARE

Thanks to its moisturizing and regenerating properties, honey is perfect for dry and dehydrated skin, nourishing it and making it more elastic and radiant. In addition, honey makes skin less prone to irritation and resistant to the negative influence of external factors.

Natural Sugar BODY SCRUB

NATURAL SUGAR
BODY SCRUB

Honey gives a dose of vitamins and oils to skin that lacks radiance. Thanks to vitamin E and soya as well as sunflower oil, it has anti-ageing properties. It contains shea butter which perfectly regenerates the damaged epidermis and protects it against harmful external factors.

- cleanses, brightens and rejuvenates the skin
- with almond oil preventing the occurrence of stretch marks
- to be applied 1-2 times a week

200 ml | 515006 |
\$ **51.5**



HONEY KING

Manuka honey is said to be the healthiest honey in the world – no wonder as it is a true richness of vitamins, minerals, sugars and flavonoids that benefit both the internal body and skin – moisturising, smoothing, soothing and revitalising it. It is unique not only due to its properties, but also due to the manner of obtaining it. This precious component is found in the nectar and pollen of flowers of tea trees growing solely in New Zealand.

Natural BODY PUDDING

NATURAL BODY PUDDING

Daily cocktail of components for a younger look. It contains lychee, coconut oil and caffeine, slowing down the skin ageing process as well as regenerating-lubricating shea butter. Thanks to allantoin and panthenol, it softens and soothes irritations, speeding up its regeneration.

- moisturises and makes the skin more flexible, restoring its youthful look
- with avocado oil that improves its tightness
- to be applied in the morning and in the evening

200 ml | 515007 |
\$ **48.5**



Multifunctional GEL

MULTIFUNCTIONAL GEL

Contains nearly 100% of its moisturising and revitalising Aloe Vera from organic plantations in Mexico, as well as soothing allantoin and panthenol. It is easily absorbed and leaves no oily film.

- perfect for face, body and hair
- for all skin types
- a must-have in every bag
- with a pleasant, fresh fragrance
- suitable for vegans

200 ml | 514010 |

\$ 37



A MINE OF VITAMINS AND MINERALS

Aloe Vera is a mine of vitamins A, B, C and E and minerals such as zinc, selenium or copper. No wonder, then, that it has been used in the medical and cosmetic worlds for ages.

Facial Cleansing FOAM

FACIAL CLEANSING FOAM

Gentle but effective and rich in moisturising ingredients. Removes makeup and dirt, leaving your skin feeling refreshed and soothed.

- very efficient (one pump = cleanse whole face)
- ideal for everyday care

150 ml | 514009 |

\$ 30



BODY LOTION
nourishes and firms

FOOT AND HAND EMULSION
reduces dryness and protects

AFTER SUN
soothes and regenerates

ONE PRODUCT,
MULTIPLE FUNCTIONS

FACE SERUM
smoothes and brightens

AFTER-SHAVE CREAM
soothes irritations and redness

HAIR MASK
intensively moisturises



Facial
TONER

FACIAL TONER

Restores the right pH value of the skin and provides the proper level of moisture. In the form of a delicate mist.

- **with a convenient atomiser**
- **alcohol-free**

150 ml | **514003** |

\$ **30**



Facial
GEL-CREAM

FACIAL GEL-CREAM

Quickly absorbed. Intensely moisturises, nourishes and soothes the skin. It provides a velvety softness and a fresh healthy look.

- **an exceptionally light formula**
- **perfect to wear under makeup**

50 ml | **514008** |

\$ **30**





Rich Revitalizing Facial **MASK**

RICH REVITALIZING FACIAL MASK

It makes the complexion smooth and elastic, regains its glow and fresh look. This face mask contains aloe, hyaluronic acid and glycerine, which ensure long-lasting hydration and slows down the ageing process.

- **creamy consistency**
- **contains blueberry and blackcurrant extracts, which provide a firming and elasticising effect**
- **with avocado oil and shea butter, which nourish the skin and strengthen its hydrolipid layer**
- **perfect for all types of skin, especially for dry and dehydrated skin**

50 ml | **514007** |

\$ 30

Intimate Hygiene **WASH**

INTIMATE HYGIENE WASH

Gently cleanses and provides a sense of purity and freshness. Strengthens the natural protective barrier and restores its proper pH.

- **soothes irritation, moisturises and reduces the risk of infection**
- **with a hygienic pump**

200 ml | **514005** |

\$ 23





Complete Care SHOWER GEL

COMPLETE CARE
SHOWER GEL

Perfectly cleanses the skin leaving the feeling of softness. For all skin types, even for children from 3 years of age. Contains almond oil, which prevents the skin from lack of moisture and intensively moisturises and smoothes the skin.

- creates a delicate foam and contains gentle washing ingredients
- with panthenol and allantoin of soothing properties

250 ml | 501002 |

\$ **27**



Complete Care CREAM

COMPLETE CARE CREAM

With its light, delicate formula, it is also suitable for sensitive skin and children from 3 years of age. Leaves a delicate protective film. With ingredients that optimally hydrate and smooth the skin of the face, body and hands.

- contains coconut and avocado oils which strengthen the skin's protective barrier
- with panthenol and allantoin, which soothe and have anti-inflammatory properties
- with a complex of vitamins C and E, which slows down the ageing process

30 ml | 501001 |

\$ **26**



Deeply Moisturizing BODY LOTION

DEEPLY MOISTURIZING
BODY LOTION

The rich formula contains, among others, almond oil, coconut oil, panthenol, allantoin and bisabolol, makes the skin deeply moisturised, nourished and increases its elasticity. Perfectly smoothes rough and dry skin, making it soft and silky.

- thanks to a carefully selected formula, it subtly oils the skin, providing with the immediate feeling of comfort and moisture
- has a soothing and relieving effect, protects the skin from drying out

250 ml | 501003 |

\$ **30**



Smoothing HAND PEELING

SMOOTHING HAND PEELING

Give your hands' skin smoothing therapy that will make it incredibly soft, hydrated and more elastic. Thanks to volcanic pearlite and powdered walnut shell the exfoliator gently removes dead cells' stimulating their restoration.

- perfectly smooths even the driest and most chapped hands
- is an ideal preparation of the skin for further phases of the skincare routine
- with panthenol, allantoin and triglyceride of calming properties

100 ml | 501005 |

\$ **23**



Nourishing HAND CREAM

NOURISHING HAND CREAM

Due to its rich formula, this cream visibly improves the condition of the hands. The synergistic combination of urea and glycerine provides intensive and long-lasting hydration. Moreover, it contains sweet almond oil and shea butter, which have exceptional nourishing, regenerating and oiling properties.

- easily spread
- with panthenol and allantoin that soothe the chapped skin
- leaves a delicate protective film that prevents drying of the skin

100 ml | 501004 |

\$ **23**

COMPLETE CARE

Refreshing ANTIPERSPIRANT FOOT SPRAY

REFRESHING ANTIPERSPIRANT FOOT SPRAY

Developed on the basis of refreshing lemongrass oil. It helps take care of the skin that is exposed to bacteria and fungi. Excellent for everyday use.

- **reduces perspiration**
- **prevents an unpleasant aroma**
- **ensures a long-lasting feeling of freshness**
- **does not contain alcohol**

150 ml | **501019** |

\$ **24**



Ultra Moisturizing FOOT CREAM

ULTRA MOISTURIZING FOOT CREAM

It strongly moisturises even very dry feet. Thanks to its softening and smoothing ingredients, it is a perfect ally in your skincare routine for cracked heels. If used systematically, it reduces the thickened epidermis.

- **with a high urea content**
- **with nourishing beeswax, shea butter and macadamia oil**
- **makes feet soft and supple again**

75 ml | **501020** |

\$ **23**



Softening FOOT SCRUB

SOFTENING FOOT SCRUB

It effectively removes calloused skin. Thanks to the content of allantoin and glycerine, it visibly smooths and softens rough and dry feet. Shea butter and vitamin E, with their moisturising qualities, will give your feet a healthy look.

- **developed from exfoliating, natural granules from apricot pits, walnut and almond shells**
- **with a refreshing and relaxing wild water mint extract**

75 ml | **501017** |

\$ **23**

ULTRA MOISTURISING TREATMENT

Urea is one of the key ingredients of the NMF – natural moisturising factor in the skin – and an excellent humectant, i.e. a water-retaining substance, the content of which decreases with age in the human body. A high, ten percent concentration of urea also has keratolytic effects – it facilitates the exfoliation of the calloused layer of the skin by softening and smoothing it, and improves its permeability, which enables the better absorption of other active substances contained in the product. You can walk through life with confidence with such moisturised and smooth feet.



Dry And Damaged Hair **SHAMPOO**

DRY AND DAMAGED HAIR SHAMPOO

It is dedicated to hair that requires intensive regeneration. Meticulously selected ingredients such as aloe vera juice, glycerine and sodium hyaluronate excellently hydrate your hair. A specially developed formula makes it easy to comb your hair and prevents it from picking up static and breaking.

- **quick and intensive regeneration of hair damaged by colouring, blow-drying or straightening**
- **a unique combination of active ingredients makes your hair incredibly soft, smooth and more flexible**

230 ml | **501012** |

\$ **21.5**

Dry And Damaged Hair **CONDITIONER**

DRY AND DAMAGED HAIR CONDITIONER

A unique formula helps regenerate even the most damaged hair, giving it a beautiful, healthy look. Thanks to its creamy formula, rich in active ingredients such as panthenol or sodium hyaluronate, it deeply hydrates and regenerates your hair protecting it from getting dry.

- **highly valuable shea butter intensively nourishes your hair, making it smooth and shiny**
- **requires rinsing**
- **for better results we recommend using it with the Dry and Damaged Hair Shampoo**

180 ml | **501015** |

\$ **20**



COMPLETE CARE

Sensitive TOOTHPASTE

SENSITIVE TOOTHPASTE

Reduces the discomfort associated with exposed dentin tubules. It is a perfect solution for the issue of sensitive teeth and gums.

- **reduces the discomfort experienced during eating and drinking**
- **the delicate toothpaste formula protects sensitive teeth, additionally helping maintain strong gums**
- **designed for adults**

75 ml | 501006 |

\$ **21.5**

EFFECTIVELY
REDUCES
DISCOMFORT
DURING THE
CONSUMPTION
OF HOT AND
COLD FOOD



A woman with voluminous, curly brown hair styled in a bun. She has dramatic makeup, including thick black winged eyeliner, long black lashes, and bright pink lipstick. She is wearing a bright pink top and a black beaded bracelet. She is looking down with her hand near her chin. The background consists of black and white horizontal stripes.

FEDERICO MAHORA MAKEUP

Express yourself

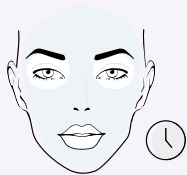
Makeup has been known since antiquity. It plays many different roles corresponding to the changing nature of women. Sometimes it helps to highlight your beauty and add confidence, other times it is used to create a completely new image, matching your mood and the circumstances. Thanks to the fantastic Federico Mahora cosmetics, your makeup will be in line with the latest trends. Do not be afraid to experiment – play with colours and turn the makeup application routine into oodles of fun.

Colour visualisations of makeup cosmetics (products) are for reference only. Actual shades may slightly differ from those shown in the pictures. It depends on the light, print quality and monitor settings.



6 STEPS

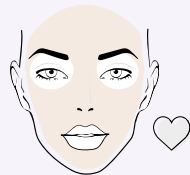
to perfect skin



STEP 1

BASE

- extends the longevity of your makeup



STEP 2

FOUNDATION

- evens out your skin tone
- conditions your skin



STEP 3

CONCEALER

- hides the imperfections of your skin



STEP 4

POWDER

- provides a matte finish
- sets your makeup



STEP 5

BRONZER

- sculpts the shape of your face



STEP 6

HIGHLIGHTER

- gives your skin a youthful glow

Silicone BASE

SILICONE BASE

Makes your makeup last longer. Mattifies and ensures a fresh look for a long time. Makes the skin perfectly smooth and ensures that pores and fine lines are less noticeable.

- with vitamin C and E complex which has antioxidant properties
- recommended for the skin which requires mattifying and has a tendency to shine

15 ml | 601301 |

\$ **30**



IT MATTIFIES
AND EVENS OUT
IMPERFECTIONS

IDEAL COVER EFFECT Foundation

IDEAL COVER EFFECT FOUNDATION

Provides a semi-matte finish and a perfect look, without the mask effect, for an unbelievably long time. Due to the light and silky consistency, it spreads evenly. It contains valuable B3 and E vitamins.

- **humidity-resistant**
- **covers all imperfections**
- **perfectly evens skin tone**
- **highly pigmented**
- **very efficient – a thin layer evenly covers and gently mattifies**

30 ml

\$ **41.5**



OLIVE BEIGE
601107 |

IDEAL FOR ALL SKIN TYPES



BLUR EFFECT Lifting Foundation

BLUR EFFECT LIFTING FOUNDATION

Superbly covers imperfections and evens out your skin tone. It guarantees a flawless, youthful and natural look without the mask effect. Thanks to its light, liquid consistency, it spreads very easily.

- **prevents shiny-looking skin**
- **gives a soft-focus effect**
- **creates an immediate visual lifting effect**
- **suitable for vegetarians**

30 ml

\$ **41.5**



LIGHT NUDE
601204 |



CLASSIC BEIGE
601205 |



SATIN SAND
601206 |

PERFECT FOR MATURE SKIN



LONG-LASTING HUMIDITY-RESISTANT FORMULA

- perfect for hot days
- recommended for active people
- allows you to enjoy a perfect look even during a workout
- ideal for big events

THE BLUR EFFECT

Also referred to as the soft-focus effect, this is a well-known term in the field of photography. It allows to smooth out all the sharp contours and blur the image in the picture so that the model's face looks flawless and perfectly smooth. In the world of cosmetics, it offers strikingly similar results. Thanks to the ingredients with unique optical properties, it creates a layer on the surface of the skin which reflects and diffuses light evenly, masking the imperfections of your skin.

GLOWING DROPS 3D Liquid Highlighter

GLOWING DROPS 3D LIQUID HIGHLIGHTER

Immediately illuminates your skin and gives it an extra glow. Silky and liquid formula. It does not smudge and is not heavy on the skin.

- guarantees phenomenally fresh and radiant look
- optically rejuvenates the skin and eliminates signs of fatigue
- ideal for the strobing makeup technique
- with a formula containing wheat germ oil and betaine
- to be used in spots on various parts of your face and body
- can be applied both under the foundation, or add a drop to your favourite foundation and blend on your hand directly before the application
- with a pipette for easy dosing
- suitable for vegetarians

10 ml | 601311 |

\$ 30



HOW TO APPLY MAKEUP USING THE STROBING TECHNIQUE

It will illuminate your forehead

It will optically enlarge your eyes

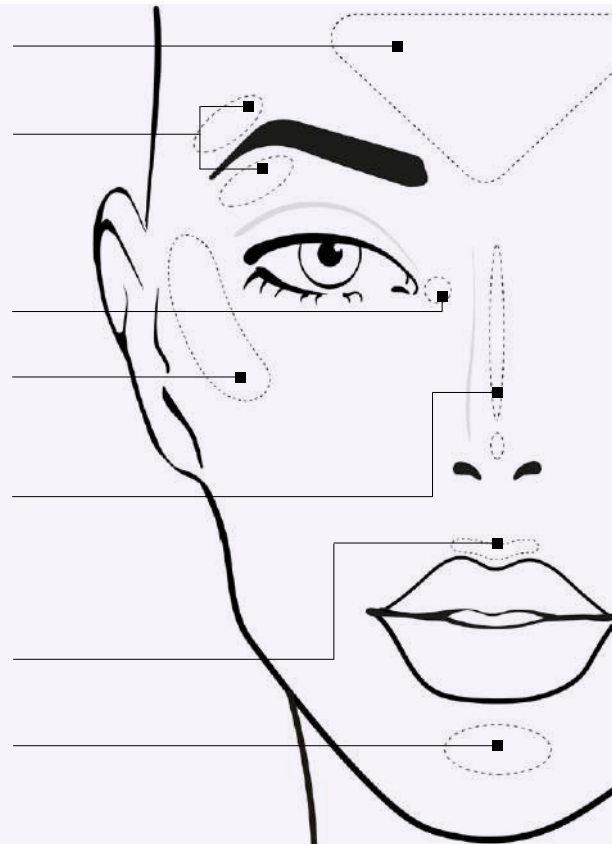
It will make your eyes look brighter

It will accentuate your cheekbones

It will make your nose appear smaller

It will make your lips look noticeably fuller

It will highlight your chin and enlarge the lower lip



Makeup Setting SPRAY

MAKE UP SETTING SPRAY

Creates an invisible coating to protect your makeup. Doesn't leave your skin feeling sticky or tight.

- refreshes and adds a healthy glow throughout the day
- in the form of light, moisturising mist

100 ml | 609003 |

\$ 27



LONG-LASTING SPARKLE

Cream Eyeshadow

LONG-LASTING SPARKLE CREAM EYESHADOW

Leaves a captivating, intense shine on the eyelids. Thanks to the creamy-powder consistency, it is easy to apply and does not accumulate in skin creases.

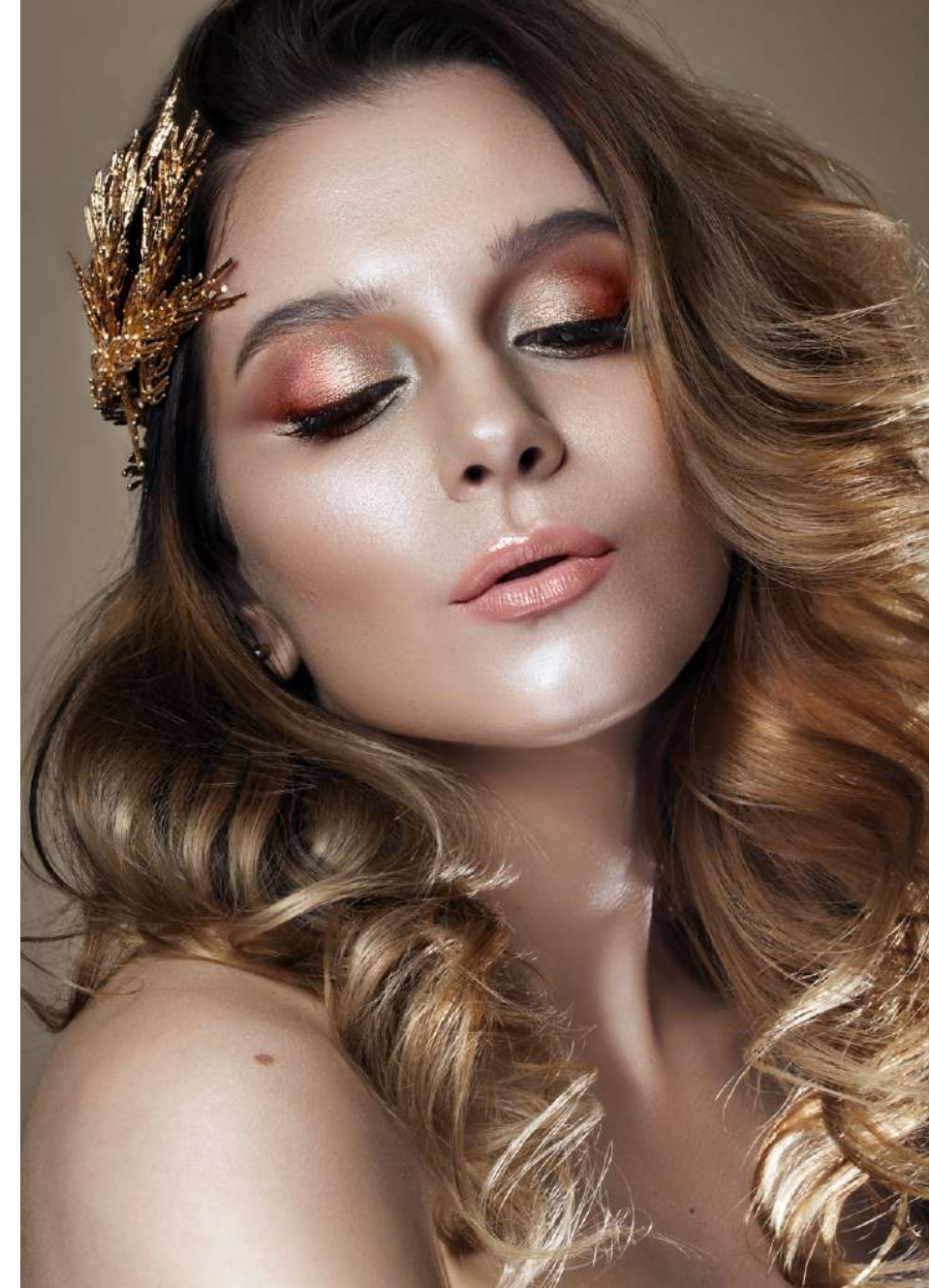
- **extremely efficient and durable, it lasts all day**
- **quickly adheres to the eyelids, giving them a stunning glow**
- **non-sticky formula does not flake off**

3.5 g

\$ **40**



GOLDEN TREASURE
606076 |

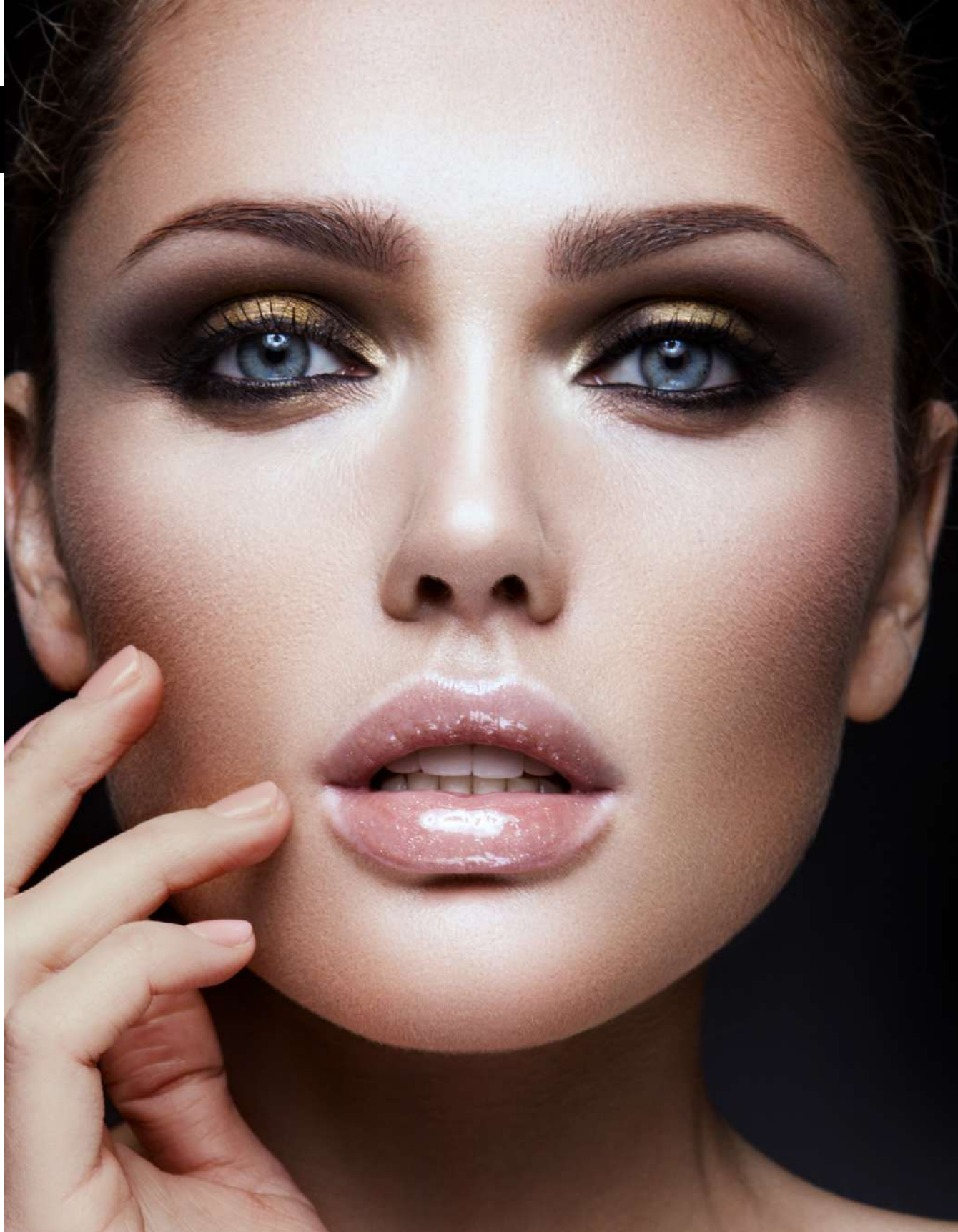


HAVE FUN WITH
YOUR MAKEUP

Modify colour saturation by applying another layer.

ENJOY
THE CONVENIENCE
OF USE

Use your finger to apply a small amount of the shadow to your eyelid.



LONG-LASTING Automatic Eye Pencil

LONG-LASTING AUTOMATIC EYE PENCIL

Expressive eye makeup for an incredibly long time? Now it's possible. It can be used for both day and evening makeup. It draws thick and thin lines with great precision.

- stays on your face without getting smudged for up to 12 hours
- the soft and velvety texture makes the application super easy
- a functional, automatic mechanism of a built-in sharpener enables you to apply makeup quickly and with great precision
- a wide range of shades – you are sure to find something you like
- ophthalmologist tested

0.31 g

\$ 17



DECADENCE BLACK
607005 |



the effect: DEEP,
MESMERISING
LOOK





Automatic BROW PENCIL

AUTOMATIC BROW PENCIL

Emphasises the shape of eyebrows and makes them look thicker.

- guarantees a deep, long-lasting colour and a natural effect
- with a built-in sharpener

0.31 g

\$ **13**



BISTRE
607012 |



AUBURN
607013 |



Diamond EYE PENCIL

DIAMOND EYE PENCIL

With diamond shine glitter that will add a glow to your look.

- glamorous
- waterproof

0.34 g | CRYSTAL BLACK | 607006 |

\$ **17**





Liquid EYELINER

LIQUID EYELINER

Beautifully emphasises the eye contour and gives intensity to the look by making eyelashes look denser.

- **a great way for a quick, classy makeup**
- **perfect and easy application**
- **store in a vertical position with the tip downwards**

1.1 ml | CARBON BLACK
607009 |

\$ **20**

Volumizing Waterproof MASCARA

VOLUMIZING WATERPROOF MASCARA

Adds incredible volume to the lashes. Its perfectly profiled brush enables you to apply the mascara evenly from the roots to the tips, enhancing the volumising effect. The volatile silicone included in its formula makes the mascara extremely long-lasting. Bold, super-defined lashes in the blink of an eye.

- **effectively protects your lashes from water and moisture**
- **suitable for vegans**

8 ml | 607108 |

\$ **27**



LEGENDARY FULL HD LASHES Mascara

LEGENDARY FULL HD LASHES MASCARA

Thanks to its advanced formula, the mascara will make your eyelashes extremely thick, flirtatiously curly and maximally long. The specially designed wand will precisely separate and define each eyelash, even the shortest ones.

- perfectly lifted and optically denser eyelashes after the first application
- without clumps, smudges or flakes
- contains waxes that nourish the eyelashes improving their condition
- thanks to the walnut extract and the innovative hexapeptide-1, it gives a subtle effect of tinted eyelashes

13.5 ml | 607039 |

\$ **33**



LASH EXPERT Mascara

LASH EXPERT MASCARA

Perfect eye makeup even for up to 12 hours, without smudging or crumbling.

- maximally lengthened and flirtatiously curled eyelashes
- an asymmetric, flexible wand: shapes and lifts the lashes with the longer bristles, and coats and separates even the tiniest lashes with the shorter bristles

11 ml | GLAM BLACK
607105 |

\$ **27**



PHENOMENAL Mascara

PHENOMENAL MASCARA

Advanced formula and an ultraprecise wand guarantee a panoramic eyelash effect.

- with an innovative conditioning ingredient for longer and thicker lashes
- lengthened, thickened, perfectly separated and curled lashes
- flexible mini-wand perfectly emphasises even the shortest and most delicate lashes

10 ml | INTENSE BLACK
607104 |

\$ **27**



3 STEP Mascara

3 STEP MASCARA

An innovative formula stunningly increases the volume of eyelashes and moisturises them properly.

- 3 in 1: extended, thickened, lifted eyelashes
- the exceptional shape of the wand allows for applying the mascara from roots to ends

8 ml | PERFECT BLACK
607103 |

\$ **24**



LUSTRE EFFECT

Hyaluronic Lip Gloss

LUSTRE EFFECT HYALURONIC LIP GLOSS

Contains hyaluronic acid that perfectly moisturises the delicate skin of the lips, leaving it soft and smooth. Shiny, semi-transparent shades provide a natural effect, perfect for wearing every day and for special occasions.

- makes your lips look fuller and plumper
- makes them sensual and silky
- regular application improves lips condition
- with a convenient, soft applicator
- has a non-sticky formula and a pleasant scent

7 ml

\$ 32



UNICORN DUST
604036 |



CLASSY LADY
604037 |



RASPBERRY KISS
604038 |



WET-LOOK LIPS EFFECT

INSTANT FEELING
OF SMOOTHNESS

PLUMP EFFECT

Chili Lip Gloss

PLUMP EFFECT CHILI LIP GLOSS

Thanks to thousands of shimmering particles it visually plumps the lips making them incredibly alluring. Expressive, fashionable colours give your lips a seductive look and bring out your hidden sex appeal.

- with chilli pepper extract
- for temptingly full and sensuous lips
- with a convenient, soft applicator
- has a non-sticky formula and a pleasant smell

7 ml

\$ 32



VERY CHERRY
604039 |



CANDY FLOSS
604040 |



GOLDEN SHINE
604041 |



WET-LOOK LIPS EFFECT

DAZZLING REFLEXES





COLOR INTENSE

Lipstick

COLOR INTENSE LIPSTICK

Provides full coverage and intense matte colour. Applying it to your lips will be a moment of pure pleasure – thanks to the creamy consistency, it is very easy to apply too. Contains nourishing chia seed oil which prevents the lipstick from drying out your lips. They will look smooth and tempting.

- **guarantees silky smooth matte finish and intense colour that stays on your lips for long**
- **contains precious chia seed oil**
- **non-sticky formula and creamy texture offering you a long-lasting feeling of comfort – you won't even feel you are wearing it**

4.2 g

\$ **28.5**

SANDSTORM
604042 |



4 CLASSIC RED
604232 |



5 PASSIONATE RED
604226 |



7 CARMINE BLISS
604230 |



8 BURGUNDY WINE
604233 |



11 AMAZING NUDE
604231 |



12 SPLENDID MAGENTA
604234 |



14 SMOKED LYCHEE
604225 |



15 BLAZING CORAL
604220 |



16 CUTE PINK
604223 |



17 RAVISHING ROSE
604222 |



18 CLASSIC NUDE
604221 |

Long-Lasting Matte LIQUID LIPSTICK

LONG-LASTING MATTE LIQUID LIPSTICK

A perfect matte effect that will stay on your lips for multiple hours. The ultra-light formula not only guarantees a perfect, intensive matte finish but also does not overburden the lips, ensuring an exceptional sense of comfort. Thanks to such precious, natural ingredients as beeswax and avocado oil, the lipstick will not make your lips dry. The easy application and long-lasting colour without the sticking, drying and smearing effect will make you fall in love with it from the first use.

- **no more frequent corrections of your makeup – the lipstick will stay on your lips for up to 6 hours**
- **its exceptional composition ensures intense, matte colour, which not only does not make your lips dry but also gives them the feeling of hydration**
- **thanks to a precise applicator and silky texture with a pleasant scent, applying colour to your lips will become a real pleasure**

6 ml

\$ 32



HOT RED
604014 |



ROSE
604017 |



CERISE
604012 |



MAUVE
604009 |



CREAMY
604016 |



BLUSH
604013 |

APPLY EVENLY TO THE LIPS USING THE APPLICATOR.



LONG-LASTING MATTE LIQUID LIPSTICK GIVES YOUR LIPS LONG-LASTING VELVETY MATTE FINISH EFFECT.



2 Phase
MAKEUP REMOVER

2 PHASE MAKEUP REMOVER

Gentle yet highly effective at removing eye and lip makeup, also waterproof formulas.

- leaves the skin moisturised, soft and smooth
- hypoallergenic

150 ml | 609001 |

\$ 27



MICELLAR LOTION

MICELLAR LOTION

Removes makeup and cleanses the skin, perfectly preparing it for further skincare routine.

- based on rose water from damask rose's petals
- perfectly refreshes the skin

150 ml | 609002 |

\$ 27



Makeup Remover
TOWEL

MAKEUP REMOVER TOWEL

Thoroughly removes even waterproof makeup without the use of cosmetic products.

- just dampen it with water
- suitable for all skin types, including sensitive skin

608107 |

\$ 33





Nail **CONDITIONER** with Keratin

NAIL CONDITIONER WITH KERATIN

Designed for splitting nails.

- **keratin regenerates and hardens the nail plate protecting it against damage**

10 ml | 603006 |

\$ **23**



Nail Top Coat **HYBRID LOOK**

NAIL TOP COAT HYBRID LOOK

Gives your painted nails a hybrid manicure look and an amazing shine without the use of UV light. The unique formula provides effective protection against chipping and wearing down of the nail polish.

- **does not require the use of UV lamp**
- **emphasises the intensity of the colour**
- **extends the durability of the manicure to up to 7 days**
- **can be removed with any nail polish remover**

11 ml | 603152 |

\$ **21,5**





Take care of your home without making an effort

It is always a pleasure to return to a neat, clean and fragrant home. So you can truly enjoy your cleaning time as well, we have created our modern SMART & CLEAN brand. Thanks to our professional line of products you can now easily in a blink of an eye take care of the cleanliness and hygiene of your home, while the new line of probiotic products is environmentally friendly, helping you create a healthy micro-climate inside your home.

Vacuum FRESHENER

VACUUM FRESHENER

It emits a beautiful scent in the vacuumed room and neutralises the unpleasant smell of dust, freshening the room for a long time. It is suitable for all types of dry-operating vacuum cleaners. Easy to use – just place it near the exhaust air filter.

2 pcs (4,7 x 7,7 cm), 7,8 g, 9,8 g

\$ 13

- 1

ORIENTAL MAGIC
708047 |
- 2

THRILLING ADVENTURE
708048 |
- 3

MALDIVES PARADISE
708031 |
- 4

SINGAPORE TWILIGHT
708034 |
- 5

CHARMING ALLEY
708026 |



FRAGRANCES LIST

FOR HER

PURE 01	P. 57
PURE 05	P. 63
PURE 06	P. 62
PURE 07	P. 57
PURE 09	P. 60
PURE 10	P. 56
PURE 12	P. 61
PURE 16	P. 63
PURE 17	P. 56
PURE 18	P. 63
PURE 20	P. 58
PURE 21	P. 58
PURE 23	P. 62
PURE 24	P. 60
PURE 25	P. 56
PURE 26	P. 60
PURE 32	P. 61
PURE 33	P. 62
PURE 34	P. 63
PURE 80	P. 63
PURE 81	P. 57
PURE 97	P. 58
PURE 98	P. 61
PURE 101	P. 60
PURE 132	P. 58
PURE ROYAL 141	P. 24
PURE ROYAL 142	P. 26

PURE ROYAL 146	P. 23
PURE ROYAL 147	P. 23
PURE ROYAL 162	P. 26
PURE ROYAL 171	P. 25
PURE 173	P. 60
PURE 174	P. 57
PURE 177	P. 60
PURE 180	P. 56
PURE 183	P. 58
PURE 237	P. 61
PURE 239	P. 58
PURE 241	P. 63
PURE 257	P. 60
PURE ROYAL 281	P. 22
PURE ROYAL 286	P. 25
PURE ROYAL 298	P. 24
PURE ROYAL 317	P. 23
PURE ROYAL 322	P. 22
PURE ROYAL 352	P. 23
PURE ROYAL 355	P. 23
PURE ROYAL 358	P. 26
PURE ROYAL 359	P. 26
PURE ROYAL 362	P. 26
PURE ROYAL 365	P. 24
PURE ROYAL 366	P. 26
PURE 372	P. 63
PURE 413	P. 61

PURE 414	P. 57
PURE 419	P. 62
PURE 420	P. 56
PURE 426	P. 61
PURE 427	P. 56
PURE 431	P. 60
PURE 432	P. 63
PURE 434	P. 58
PURE 436	P. 60
PURE 437	P. 56
PURE 438	P. 56
PURE 440	P. 60
PURE 441	P. 60
PURE 442	P. 60
PURE 443	P. 56
PURE 444	P. 58
PURE 445	P. 57
PURE 446	P. 58
PURE 447	P. 56
PURE 448	P. 60
PURE 449	P. 56
PURE 484	P. 63
PURE 485	P. 56
PURE 486	P. 56
PURE 487	P. 58
PURE 488	P. 57
PURE 489	P. 58

PURE 491	P. 58
PURE 492	P. 60
PURE 493	P. 57
PURE 700	P. 56
PURE 701	P. 57
PURE 702	P. 57
PURE 703	P. 63
PURE 706	P. 57
PURE ROYAL 707	P. 24
PURE ROYAL 708	P. 22
PURE ROYAL 709	P. 25
PURE ROYAL 710	P. 24
PURE ROYAL 711	P. 22
PURE ROYAL 712	P. 25
PURE ROYAL 713	P. 24
PURE ROYAL 714	P. 25
PURE ROYAL 715	P. 24
PURE 716	P. 56
PURE 717	P. 60
PURE ROYAL 777	P. 25
PURE ROYAL 800	P. 22
PURE ROYAL 801	P. 25
PURE ROYAL 802	P. 26
PURE ROYAL 803	P. 26
PURE ROYAL 804	P. 26
PURE ROYAL 806	P. 22
PURE ROYAL 807	P. 22

PURE ROYAL 809	P. 25
PURE ROYAL 810	P. 24
PURE ROYAL 811	P. 26
PURE ROYAL 817	P. 22
PURE ROYAL 818	P. 22
PURE ROYAL 819	P. 27
PURE ROYAL 820	P. 25
PURE ROYAL 825	P. 26
PURE ROYAL 826	P. 22
PURE ROYAL 827	P. 22
PURE ROYAL 828	P. 25
PURE ROYAL 829	P. 26
PURE ROYAL 833	P. 22
PURE ROYAL 834	P. 25
PURE ROYAL 835	P. 22
PURE ROYAL 836	P. 22
PURE ROYAL 841	P. 21
PURE ROYAL 842	P. 21
PURE ROYAL 843	P. 21
PURE ROYAL 844	P. 21
PURE ROYAL 845	P. 21
PURE ROYAL 846	P. 21
PURE ROYAL 847	P. 21
PURE ROYAL 848	P. 21

FOR HIM

PURE 43	P. 69
PURE 52	P. 66
PURE 54	P. 69
PURE 55	P. 68
PURE 56	P. 68
PURE 57	P. 67
PURE 64	P. 66
PURE 93	P. 67
PURE 110	P. 68
PURE 134	P. 67
PURE 135	P. 69
PURE ROYAL 151	P. 31
PURE ROYAL 152	P. 31
PURE ROYAL 160	P. 30

PURE ROYAL 169	P. 28
PURE ROYAL 195	P. 30
PURE ROYAL 198	P. 30
PURE ROYAL 199	P. 28
PURE 224	P. 66
PURE ROYAL 300	P. 31
PURE ROYAL 301	P. 28
PURE ROYAL 326	P. 28
PURE ROYAL 327	P. 31
PURE ROYAL 332	P. 31
PURE ROYAL 334	P. 31
PURE ROYAL 335	P. 28
PURE 452	P. 67
PURE 457	P. 68

PURE 465	P. 66
PURE 466	P. 66
PURE 471	P. 66
PURE 472	P. 68
PURE 473	P. 69
PURE 474	P. 68
PURE 475	P. 66
PURE 478	P. 66
PURE 479	P. 68
PURE 480	P. 69
PURE 481	P. 66
PURE 482	P. 66
PURE 483	P. 69
PURE 490	P. 68

PURE 494	P. 65
PURE 495	P. 65
PURE 496	P. 65
PURE 497	P. 65
PURE 498	P. 65
PURE 704	P. 68
PURE 705	P. 68
PURE 718	P. 67
PURE 719	P. 66
PURE 720	P. 68
PURE 721	P. 67
PURE ROYAL 812	P. 28
PURE ROYAL 813	P. 28
PURE ROYAL 814	P. 31

PURE ROYAL 815	P. 28
PURE ROYAL 821	P. 28
PURE ROYAL 822	P. 28
PURE ROYAL 823	P. 29
PURE ROYAL 824	P. 30
PURE ROYAL 830	P. 28
PURE ROYAL 831	P. 31
PURE ROYAL 832	P. 28
PURE ROYAL 837	P. 29
PURE ROYAL 838	P. 31
PURE ROYAL 839	P. 29
PURE ROYAL 840	P. 31
PURE ROYAL 849	P. 31

UNISEX

PURE ROYAL 900	P. 11
PURE ROYAL 900	P. 18
PURE ROYAL 901	P. 17
PURE ROYAL 902	P. 16
PURE ROYAL 903	P. 16
PURE ROYAL 904	P. 16
PURE ROYAL 905	P. 16
PURE ROYAL 906	P. 16
PURE ROYAL 907	P. 18
PURE ROYAL 908	P. 14
PURE ROYAL 909	P. 14
PURE ROYAL 910	P. 18
PURE ROYAL 911	P. 16
PURE ROYAL 912	P. 17
PURE ROYAL 913	P. 17

PURE ROYAL 914	P. 16
PURE ROYAL 915	P. 14
PURE ROYAL 916	P. 17
PURE ROYAL 917	P. 16
PURE ROYAL 918	P. 14
PURE ROYAL 919	P. 18
PURE ROYAL 920	P. 17
PURE ROYAL 923	P. 16
PURE ROYAL 924	P. 18
PURE ROYAL 925	P. 16
PURE ROYAL 926	P. 17
PURE ROYAL 927	P. 17
PURE ROYAL 928	P. 19

PURE ROYAL 929	P. 14
PURE ROYAL 930	P. 16
PURE ROYAL 931	P. 18
PURE ROYAL 932	P. 18
PURE ROYAL 933	P. 18
PURE ROYAL 934	P. 14
PURE ROYAL 970	P. 14
PURE ROYAL 971	P. 14
PURE ROYAL 972	P. 17
PURE ROYAL 973	P. 19
PURE ROYAL 974	P. 16
PURE ROYAL 975	P. 14
PURE ROYAL 976	P. 14
PURE ROYAL 977	P. 18
PURE ROYAL 979	P. 14

COMING SOON	P. 6
Ambergris	P. 9
Ambre Royal	P. 14
Black	P. 17
Bubble	P. 11
Flamingo	P. 10
Gold	P. 16
Malachite	P. 8
Muffin	P. 12
Ruby	P. 18
Sexy Cashmere	P. 13
Violet Oud	P. 15

UTIQUE

UNISEX

FRAGRANCE FAMILY	KEY NOTE	FRAGRANCES
FLORAL	FRUITY	929, FLAMINGO
	ORIENTAL	909, 915, 922, 979
	CITRUS	921
	WOODY	918
	CHYPRE	970, 971, 976,
	GOURMAND	934, 975
	FOUGERE	
CITRUS	FLORAL	914
	FRUITY	903
	WOODY	
	LIME	911
	CHYPRE	902,
ORIENTAL	FLORAL	913, 920, MUFFIN, VIOLET OUD
	FRUITY	972, AMBRE ROYAL, BUBBLE, MALACHITE
	WOODY	904, 905, 974, BLACK, GOLD, RUBY
	SPICY	906, 917
	AMBERGRIS	AMBERGRIS
	GOURMAND	923, 930
	CHYPRE	925,926
WOODY	FOUGERE	927
	FLORAL	924
	FRUITY	900, 977
	ORIENTAL	932, SEXY CASHMERE
	GOURMAND	910
CHYPRE	FOUGERE	931,
	FLORAL	912
	FRUITY	916
FOUGERE	CITRUS	
	SPICY	901
	LAVENDER	919, 933
	GREEN	928
	CHYPRE	973

FOR HER

FRAGRANCE FAMILY	KEY NOTE	FRAGRANCES	PEROMONE	INTENSE	SHOWER GEL	BODY BALM	ANTIPERSPIRANT ROLL-ON	BODY MIST
	FRUITY	10, 17, 25, 180, 281, 322, 420, 427, 437, 438, 443, 447, 449, 486, 493, 700, 708, 711, 716, 800, 806, 807, 817, 818, 827, 833, 835, 836, 841, 845, 847	10	10, 17, 25				
	ORIENTAL	20, 97, 132, 147, 146, 183, 239, 434, 446, 317, 352, 444, 355, 487, 489	20, 489	20, 97, 489	20	20	20	20
	WATER	7, 141, 174, 701, 707, 488						
	GREEN	1, 81	1, 81	81	81	81	81	
	ALDEHYDE	21, 826		21				
	CITRUS	298, 491, 702, 810						
	WOODY	365, 414, 445, 777, 715, 710, 713						
	CHYPRE	485, 706, 848						
	GOURMAND	842, 846						
	FLORAL							
CITRUS	LEMON	33, 828, 712	33	33				
	FRUITY	419						
	MANDARIN	23, 801	23	23				
	ORANGE	6						
	FLORAL	709, 714, 844						
	ORIENTAL	484						
ORIENTAL	FLORAL	9, 101, 171, 257, 431, 436, 440, 441, 442, 717, 809, 820, 834	101, 431, 436	9, 436		809		
	FRUITY	12, 98, 237, 286, 413, 426, 492	98, 413	98, 413				
	WOODY	26, 142, 162, 359, 448						
	SPICY	24, 173, 177, 366		173	366	366	173	
	AMBERGRIS	32						
WOODY	FLORAL	241, 313, 825						
	FRUITY	358						
	ORIENTAL	703						
	CITRUS	500, 843						
CHYPRE	FRUITY	5, 16, 34, 80, 362, 372, 804, 811, 829	5, 34	5, 16				
	WOODY	18	18	18	18	18	18	18
	FLORAL	432, 802, 803, 819						

FRAGRANCES LIST

FOR HIM

FRAGRANCE FAMILY	KEY NOTE	FRAGRANCES	PHEROMONE	INTENSE	SHOWER GEL	ANTIPERSPIRANT ROLL-ON
CHYPRE	FRUITY	169, 498				
	WOODY	56	56	56		
	AMBERGRIS AND MUSK	110	110	110		
	WATER	704, 705				
	ORIENTAL	490				
ORIENTAL	FLORAL	52, 465, 481	52	52	52	52
	FRUITY	478, 482, 813, 830				
	SPICY	199, 224, 466, 815, 832				199
	AMBERGRIS	64, 823	64	64		
	WOODY	301, 326, 335, 471, 475, 812, 821, 822, 837				
	GOURMAND	839				
	FOUGERE	494, 496				
	CITRUS	495				
	FRUITY	55, 195, 427, 479, 824	472	472		472
	PATCHOULI	160, 198, 327, 334				
WOODY	VETIVER	151, 152				
	WATER	457, 474	457	457		
	CITRUS	497, 500				
	GOURMAND	720				
	CHYPRE	838				
FOUGERE	FERN	43, 135, 332	135	43		
	LAVENDER	54, 300, 473, 480, 483, 814, 831, 849	473	473		473
CITRUS	LEMON	57				
	MANDARIN	134, 452	134	134		134
	ORANGE	93				
	ORIENTAL	721, 840				
	WOODY	718				

FOR HOME

FRAGRANCE FAMILY	KEY NOTE	FRAGRANCES	AIR FRESHENER	WARDROBE FRAGRANCE	VACUUM FRESHENER	
					Oriental Magic	Thrilling Adventure
CHYPRE	WOODY	18, 56	18	18		
	FRUITY	05, 372				
CITRUS	MANDARIN	134		23		
	LEMON			33		
FLORAL	FRUITY					
	ORIENTAL	20, 489	20, 489	20, 489	20	
	ALDEHYDE	21				
	GREEN	81				
WOODY	FRUITY	472, 900	472, 900	472, 900		472
	ORIENTAL					
	GOURMAND	910				
	CITRUS					
ORIENTAL	WATER					
	FLORAL	52, 431, 436, 809	809	436, 809		
	FRUITY	32, 413		413		
	SPICY	366		366		
	AMBERGRIS		823	823		
FOUGERE	WOODY	335		335		
	LAVENDER	473		473		



All prices in the Catalogue include GST. Visit shop-au.fmworld.com for current stock update. FM WORLD product Catalogue no. 35 is valid from 5th November 2021.

The offer included in the Catalogue in terms of prices and products is valid from 5th November 2021 while stock lasts or until a new Catalogue is introduced. Detailed information about the products and usage methods can be found on au.fmworld.com. Catalogues, the Marketing Plan and other advertising, promotional, and information materials that are issued or explicitly approved by FM WORLD are the only authorised sources of information for the purpose of selling and advertising of FM WORLD.

The FM WORLD branded products are genuine products by FM WORLD.

© FM World Spółka z ograniczoną odpowiedzialnością, address: ul. Żmigrodzka 247, 51-129 Wrocław, registered in the National Court Register, District Court Wrocław-Fabryczna in Wrocław, 6th Economic Department of National Court Register, under no. NCR (KRS) 0000411446, NIP: 8952010760, with a fully paid-up share capital in the amount of PLN 182 900,00, 2021.